



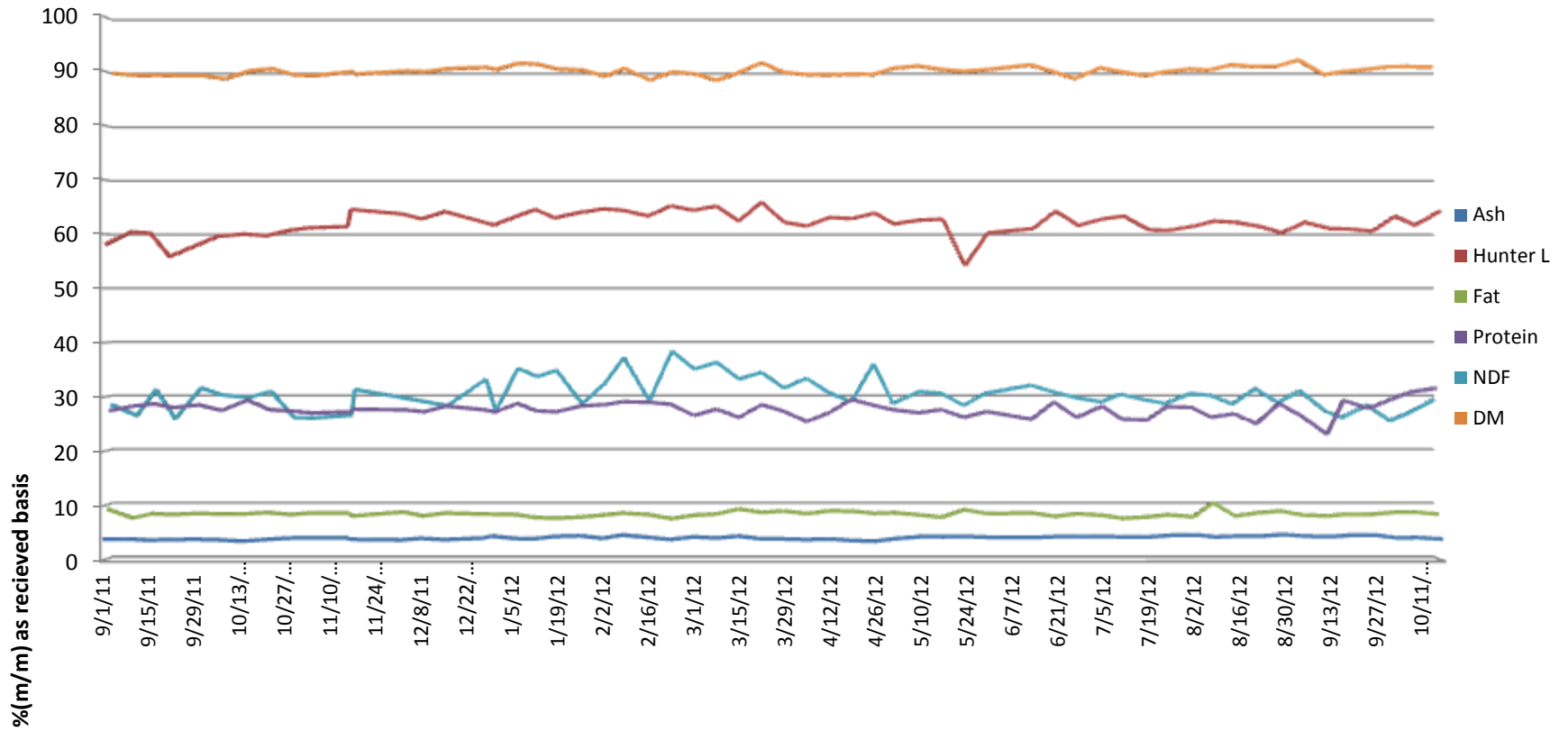
SGS Brookings
241 34th Ave
Brookings, SD 57006

BLUE FLINT ETHANOL

Underwood, ND



5500 Cenex Drive
Inver Grove
Heights, MN 55077
PH. 800-769-1066

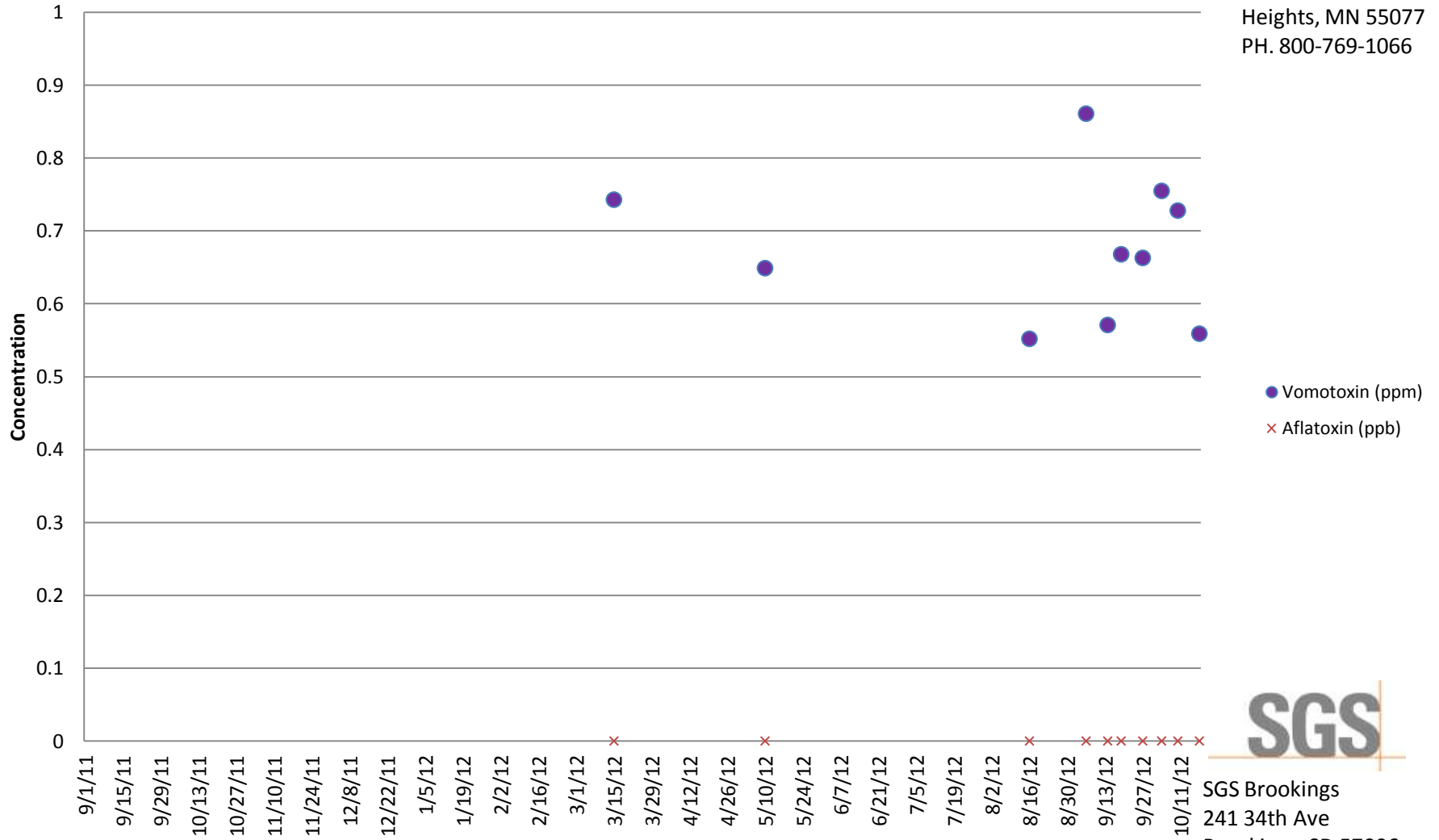


BLUE FLINT ETHANOL

Underwood, ND



Inver Grove Heights, MN 55077
PH. 800-769-1066



SGS Brookings
241 34th Ave
Brookings, SD 57006

Customer: BLUE FLINT ETHANOL

Address: 2841 3RD STREET SW
UNDERWOOD, ND
UNITED STATES

Analyte			Lysine	Crude ash as received	Hunter L Value	Phosphorus	Crude fat as is	NDF as received	Moisture	Drymatter	Aflatoxin	DON (Vomitoxin)	Crude protein as received
Scheme			Amino Acid Profile	Ash Content: Feed	Hunter Color	Minerals: As Received (No Drymatter)	Fat content in Animal Feed	NDF	Moisture Content	Moisture Content	Aflatoxin by ELISA	Vomitoxin (DON) by ELISA	Protein Content
Detection Limit						0.0063					5	0.5	
Unit	Received	Order	%	%(m/m)		%(m/m)	%(m/m)	%	%(m/m)	%(m/m)	PPB	PPM	%(m/m)
8/29/11	9/1/2011 11:07	MW11-03107		3.981	58.05	0.74	9.3	28.41	9.98	90.02			27.34
9/6/11	9/9/2011 10:58	MW11-03269		4.043	60.38	0.71	7.64	26.37	10.38	89.62			28.27
9/12/11	9/15/2011 11:27	MW11-03381		3.848	60.16	0.69	8.44	31.25	10.33	89.67			28.64
9/19/11	9/21/2011 10:48	MW11-03489		3.93	55.82	0.77	8.27	25.78	10.43	89.57			27.94
9/26/11	9/29/2011 10:29	MW11-03670		3.995	57.85	0.73	8.48	31.49	10.42	89.58			28.43
10/3/11	10/6/2011 10:24	MW11-03822		3.92	59.57	0.82	8.38	30.18	11.01	88.99			27.4
10/10/11	10/14/2011 10:30	MW11-04010		3.645	59.98	0.65	8.41	29.75	9.5	90.5			29.32
10/17/11	10/21/2011 10:34	MW11-04177		3.954	59.67	0.74	8.65	30.88	9.14	90.86			27.55
10/24/11	10/28/2011 10:33	MW11-04337		4.213	60.67	0.9	8.26	26.01	10.31	89.69			27.28
10/31/11	11/3/2011 10:07	MW11-04430		4.252	61.12	0.86	8.57	25.94	10.4	89.6			26.94
11/7/11	11/15/2011 10:53	MW11-04700		4.267	61.37	0.94	8.52	26.43	9.66	90.34			27.15
DDGS 11/14/11	11/16/2011 11:04	MW11-04759		3.988	64.51	0.74	8.01	31.24	10.12	89.88			27.63
11/28/11	12/2/2011 10:29	MW11-05099		3.879	63.66	0.85	8.75	29.6	9.56	90.44			27.51
12/5/11	12/8/2011 10:18	MW11-05246		4.178	62.75	0.98	8.03	28.95	9.68	90.32			27.16
12/12/11	12/15/2011 10:14	MW11-05414		3.924	64.12	0.86	8.55	28.24	9.11	90.89			28.22
12/19/11	12/27/2011 10:03	MW11-05599		4.223	62.17	0.86	8.36	33.15	8.88	91.12			27.51
12/27/11	12/30/2011 9:55	MW11-05701		4.588	61.63	1.02	8.33	27.25	9.24	90.76			27.11
1/3/12	1/6/2012 10:13	MW12-00128		4.144	63.18	0.95	8.25	35.14	8.07	91.93			28.69
1/9/12	1/12/2012 10:00	MW12-00259		4.079	64.51	0.73	7.72	33.62	8.28	91.72			27.33
1/16/12	1/18/2012 9:42	MW12-00376		4.516	62.97	0.86	7.6	34.77	9.16	90.84			27.14
1/23/12	1/26/2012 11:08	MW12-00605		4.646	63.95	0.87	7.82	28.58	9.38	90.62			28.24

Customer: BLUE FLINT ETHANOL

Address: 2841 3RD STREET SW
UNDERWOOD, ND
UNITED STATES

Analyte			Lysine	Crude ash as received	Hunter L Value	Phosphorus	Crude fat as is	NDF as received	Moisture	Drymatter	Aflatoxin	DON (Vomitoxin)	Crude protein as received
Scheme			Amino Acid Profile	Ash Content: Feed	Hunter Color	Minerals: As Received (No Drymatter)	Fat content in Animal Feed	NDF	Moisture Content	Moisture Content	Aflatoxin by ELISA	Vomitoxin (DON) by ELISA	Protein Content
Detection Limit						0.0063					5	0.5	
Unit	Received	Order	%	%(m/m)		%(m/m)	%(m/m)	%	%(m/m)	%(m/m)	PPB	PPM	%(m/m)
1/30/12	2/2/2012 10:00	MW12-00744		4.175	64.62	0.81	8.18	32.32	10.52	89.48			28.48
2/6/12	2/8/2012 9:54	MW12-00874		4.783	64.36	0.88	8.55	37.15	9.06	90.94			29.01
2/13/12	2/16/2012 9:48	MW12-01072		4.369	63.3	0.88	8.25	29.14	11.24	88.76			28.92
2/20/12	2/23/2012 9:53	MW12-01186		3.959	65.18	0.93	7.53	38.37	9.72	90.28			28.53
2/27/12	3/1/2012 10:29	MW12-01354		4.448	64.34	0.88	8.14	35.02	10.06	89.94			26.47
3/5/12	3/8/2012 10:08	MW12-01506		4.224	65.13	0.65	8.37	36.27	11.3	88.7			27.65
3/12/12	3/15/2012 11:34	MW12-01686	1.07	4.575	62.36	0.79	9.29	33.16	9.79	90.21	<5	0.743	26.11
3/19/12	3/22/2012 10:03	MW12-01848		4.076	65.87	0.71	8.67	34.4	8	92			28.48
3/26/12	3/29/2012 9:37	MW12-01996		4.057	62.14	0.76	8.93	31.49	9.82	90.18			27.24
4/2/12	4/5/2012 11:42	MW12-02180		3.943	61.45	0.77	8.43	33.31	10.2	89.8			25.35
4/19/12	4/12/2012 11:03	MW12-02330		4.053	63.03	0.81	8.95	30.64	10.3	89.7			26.98
4/16/12	4/19/2012 11:02	MW12-02511		3.78	62.82	0.84	8.9	28.95	10.1	89.9			29.45
4/23/12	4/26/2012 10:19	MW12-02659		3.639	63.82	0.8	8.49	35.98	10.2	89.8			28.33
4/30/12	5/2/2012 11:29	MW12-02835		4.093	61.85	0.84	8.62	28.59	9.04	90.96			27.52
5/7/12	5/10/2012 11:09	MW12-03029	1.09	4.492	62.55	0.8	8.21	30.83	8.6	91.4	<5	0.649	26.97
5/14/12	5/17/2012 10:50	MW12-03202		4.467	62.71	0.74	7.78	30.52	9.24	90.76			27.56
5/21/12	5/24/2012 11:31	MW12-03372		4.519	54.2	0.79	9.16	28.31	9.61	90.39			26.13
5/29/12	5/31/2012 10:42	MW12-03515		4.369	60.18	0.76	8.46	30.52	9.34	90.66			27.19
6/11/12	6/14/2012 10:44	MW12-03946		4.327	60.99	0.83	8.56	32.01	8.39	91.61			25.77
6/18/12	6/21/2012 11:00	MW12-04130		4.491	64.21	0.8	7.93	30.8	9.64	90.36			28.96
6/25/12	6/28/2012 11:01	MW12-04387		4.527	61.56	0.85	8.44	29.72	10.98	89.02			26.09

Customer: BLUE FLINT ETHANOL

Address: 2841 3RD STREET SW
UNDERWOOD, ND
UNITED STATES

Analyte			Lysine	Crude ash as received	Hunter L Value	Phosphorus	Crude fat as is	NDF as received	Moisture	Drymatter	Aflatoxin	DON (Vomitoxin)	Crude protein as received
Scheme			Amino Acid Profile	Ash Content: Feed	Hunter Color	Minerals: As Received (No Drymatter)	Fat content in Animal Feed	NDF	Moisture Content	Moisture Content	Aflatoxin by ELISA	Vomitoxin (DON) by ELISA	Protein Content
Detection Limit						0.0063					5	0.5	
Unit	Received	Order	%	%(m/m)		%(m/m)	%(m/m)	%	%(m/m)	%(m/m)	PPB	PPM	%(m/m)
7/2/12	7/6/2012 10:09	MW12-04624		4.518	62.83	0.83	8.11	28.94	8.95	91.05			28.2
7/9/12	7/12/2012 11:17	MW12-04809		4.426	63.26	0.88	7.58	30.35	9.66	90.34			25.8
7/16/12	7/20/2012 9:31	MW12-05034		4.448	60.76	0.86	7.84	29.25	10.41	89.59			25.64
7/23/12	7/26/2012 9:55	MW12-05201		4.715	60.66	0.87	8.23	28.64	9.73	90.27			28.11
7/30/12	8/3/2012 9:54	MW12-05397		4.795	61.46	0.87	7.86	30.49	9.2	90.8			27.95
8/6/12	8/9/2012 10:50	MW12-05564		4.44	62.37	0.81	10.45	30.12	9.38	90.62			26.16
8/13/12 WEEKLY	8/16/2012 10:20	MW12-05720	0.99	4.587	62.13	0.85	8	28.53	8.39	91.61	<5	0.552	26.78
8/20/12	8/23/2012 10:09	MW12-05893		4.584	61.37	0.86	8.61	31.38	8.73	91.27			24.98
8/27/12	8/30/2012 9:55	MW12-06038		4.864	60.23	0.87	8.91	28.84	8.7	91.3			28.68
9/4/12	9/6/2012 10:49	MW12-06207		4.567	62.14	0.84	8.18	30.98	7.48	92.52	<5	0.861	26.37
9/10/12	9/14/2012 9:41	MW12-06390		4.485	60.96	0.81	8.01	27.2	10.22	89.78	<5	0.571	23.01
9/17/12	9/19/2012 9:51	MW12-06534		4.723	60.93	0.95	8.32	25.98	9.71	90.29	<5	0.668	29.25
9/24/12	9/27/2012 10:37	MW12-06776		4.789	60.52	0.85	8.31	28.33	9.27	90.73	<5	0.663	27.79
10/1/12	10/4/2012 10:30	MW12-06943		4.245	63.26	0.78	8.67	25.44	8.75	91.25	<5	0.755	29.5
10/8/12	10/10/2012 10:13	MW12-07067		4.323	61.58	0.73	8.75	26.88	8.73	91.27	<5	0.728	30.83
10/15/12	10/18/2012 10:39	MW12-07302		4.029	64.23	0.74	8.34	29.42	8.79	91.21	<5	0.559	31.53