



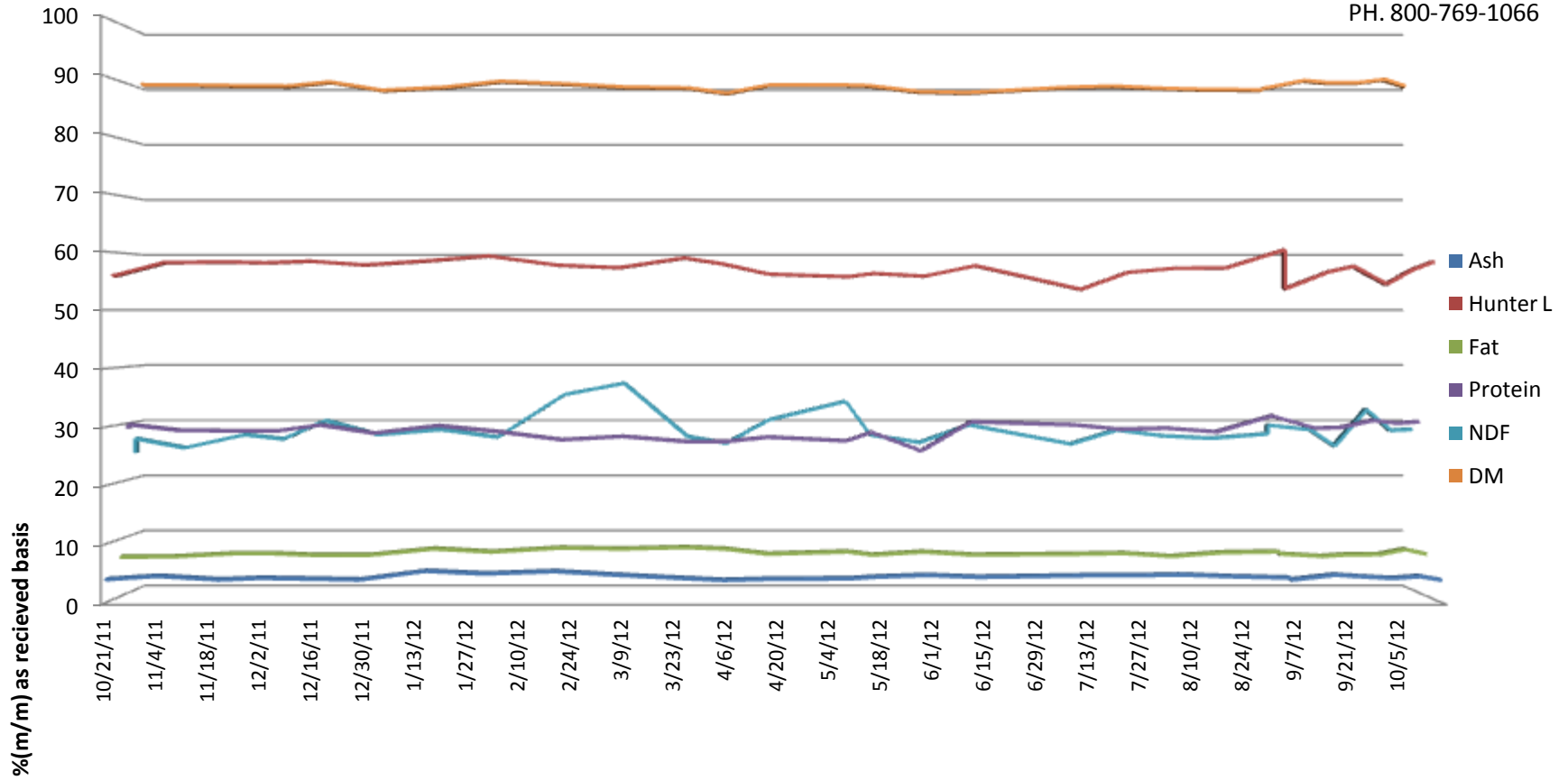
SGS Brookings
241 34th Ave
Brookings, SD 57006

Bushmills Ethanol

Atwater, NE



5500 Cenex Drive
Inver Grove
Heights, MN 55077
PH. 800-769-1066

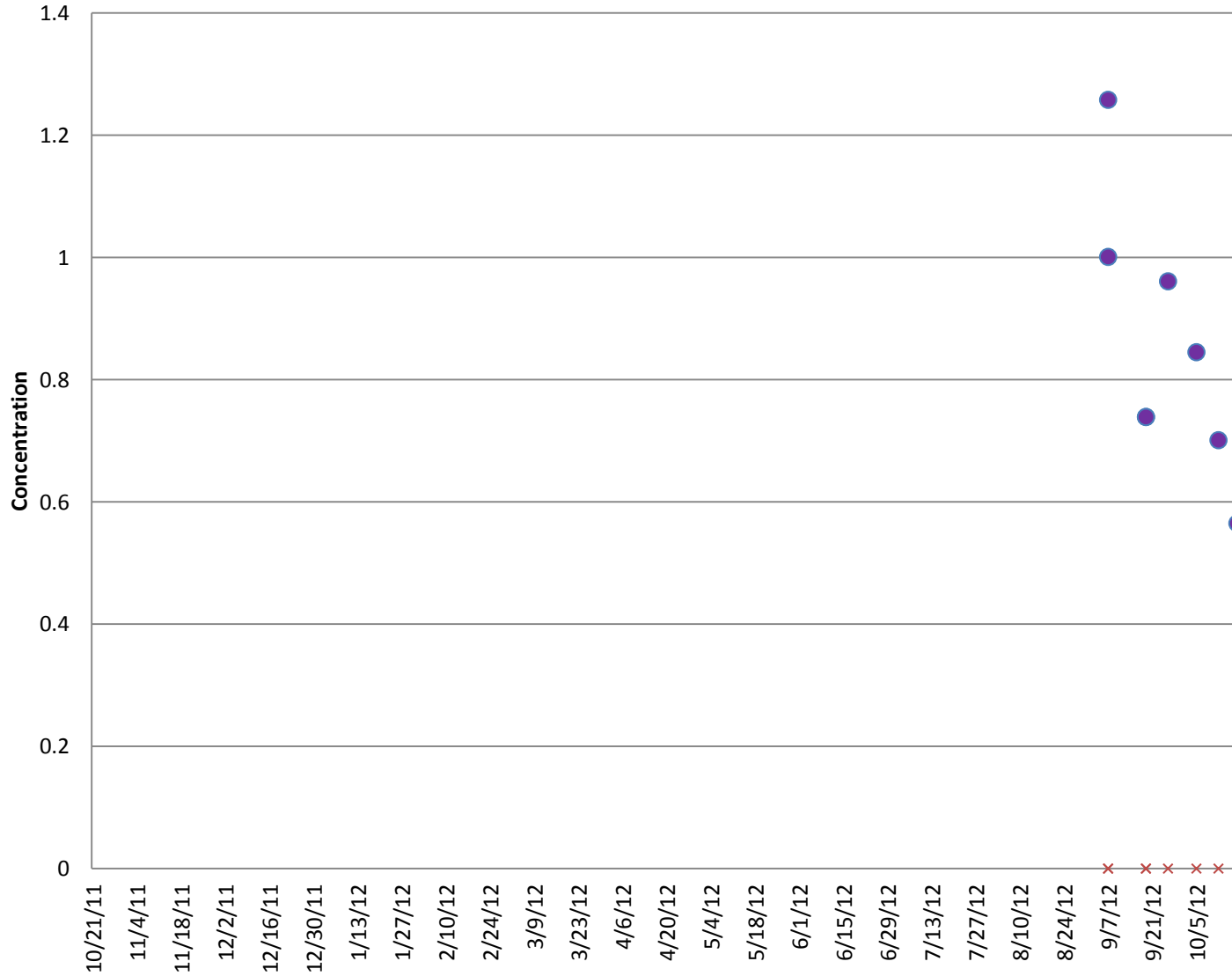


Bushmills Ethanol

Atwater, NE



Inver Grove Heights, MN 55077
PH. 800-769-1066



● Vomotoxin (ppm)
× Aflatoxin (ppb)



SGS Brookings
241 34th Ave
Brookings, SD 57006

Customer: BUSHMILLS ETHANOL

Address: 17025 HWY 12 NE
ATWATER, NE
UNITED STATES

Analyte			Lysine	Crude ash as received	Hunter L Value	Phosphorus	Crude fat as is	NDF as received	Moisture	Drymatter	Aflatoxin	DON (Vomitoxin)	Crude protein as received
Scheme			Amino Acid Profile	Ash Content: Feed	Hunter Color	Minerals: As Received (No Drymatter)	Fat content in Animal Feed	NDF	Moisture Content	Moisture Content	Aflatoxin by ELISA	Vomitoxin (DON) by ELISA	Protein Content
Detection Limit						0.0063					5	0.5	
Unit	Received	Order	%	%(m/m)		%(m/m)	%(m/m)	%	%(m/m)	%(m/m)	PPB	PPM	%(m/m)
WEEK 40	10/12/2012 10:16	MW12-07143		4.614	56.92	0.75	8.25	28.52	8.37	91.63	<5	0.701	30.01
WEEK 44	10/18/2012 10:34	MW12-07300		3.959	58.34	0.8	7.41	28.71	9.6	90.4	<5	0.565	30.3
WEEK 35	10/21/2011 10:31	MW11-04175		4.083	55.88	0.78	6.96	27.05	9.35	90.65			29.78
WEEK 42	11/4/2011 10:22	MW11-04464		4.658	58.19	0.98	6.98	25.41	9.39	90.61			28.79
WEEK 44	11/21/2011 10:30	MW11-04838		4.036	58.3	0.95	7.52	27.76	9.56	90.44			28.67
WEEK 46	12/2/2011 10:05	MW11-05097		4.311	58.16	1	7.54	26.98	9.58	90.42			28.69
week 48	12/14/2011 11:00	MW11-05385		4.192	58.43	1.01	7.26	30.28	8.85	91.15			29.71
WEEK 51	12/29/2011 11:06	MW11-05688		4.036	57.78	0.86	7.26	27.76	10.35	89.65			28.27
WEEK 1	1/16/2012 10:55	MW12-00337		5.516	58.52	0.97	8.37	28.67	9.79	90.21			29.6
WEEK 41	10/21/2011 10:30	MW11-04174		4.156	56.26	0.79	6.8	24.49	9	91			29.07
WEEK 2	2/1/2012 10:52	MW12-00704		5.055	59.34	0.91	7.82	27.31	8.73	91.27			28.62
WEEK 5	2/20/2012 10:25	MW12-01112		5.458	57.75	0.82	8.52	34.92	9.21	90.79			27.1
WEEK 7	3/8/2012 10:17	MW12-01510		4.842	57.31	0.93	8.35	36.94	9.76	90.24			27.7
WEEK 10	3/26/2012 10:48	MW12-01903		4.271	59	0.88	8.61	27.43	9.92	90.08			26.78
WEEK 13	4/6/2012 10:31	MW12-02196		3.956	57.9	0.83	8.34	26.23	10.88	89.12			26.8
WEEK 17	4/18/2012 10:49	MW12-02475		4.144	56.21	0.82	7.45	30.38	9.41	90.59			27.57
WEEK 18	5/17/2012 10:07	MW12-03183		4.505	56.33	0.78	7.29	27.69	9.52	90.48			28.42
WEEK 17	5/10/2012 10:43	MW12-03018		4.219	55.76	0.81	7.85	33.72	9.4	90.6			26.9
WEEK 21	5/31/2012 10:18	MW12-03505		4.807	55.85	0.82	7.82	26.37	10.56	89.44			25.13
WEEK 23	6/14/2012 10:07	MW12-03930		4.484	57.66	0.85	7.3	29.5	10.77	89.23			30.28
week 26	7/13/2012 11:05	MW12-04855		4.745	53.58	0.91	7.44	26.1	9.8	90.2			29.73

Customer: BUSHMILLS ETHANOL

Address: 17025 HWY 12 NE
ATWATER, NE
UNITED STATES

Analyte			Lysine	Crude ash as received	Hunter L Value	Phosphorus	Crude fat as is	NDF as received	Moisture	Drymatter	Aflatoxin	DON (Vomitoxin)	Crude protein as received
Scheme			Amino Acid Profile	Ash Content: Feed	Hunter Color	Minerals: As Received (No Drymatter)	Fat content in Animal Feed	NDF	Moisture Content	Moisture Content	Aflatoxin by ELISA	Vomitoxin (DON) by ELISA	Protein Content
Detection Limit						0.0063					5	0.5	
Unit	Received	Order	%	%(m/m)		%(m/m)	%(m/m)	%	%(m/m)	%(m/m)	PPB	PPM	%(m/m)
WEEK 28	7/26/2012 10:54	MW12-05217		4.746	56.51	0.91	7.57	28.58	9.58	90.42			28.95
WEEK 31	8/8/2012 10:17	MW12-05505		4.894	57.22	0.87	7.04	27.55	9.96	90.04			29.15
WEEK 33	8/22/2012 10:23	MW12-05870		4.583	57.28	0.89	7.7	27.11	10.2	89.8			28.51
WEEK 35	9/7/2012 11:09	MW12-06242		4.012	53.63	0.69	7.48	29.46	10.05	89.95	<5	1.258	31.27
WEEK 36	9/19/2012 10:25	MW12-06548		4.857	56.57	0.98	7.06	28.65	8.57	91.43	<5	0.739	29.13
WEEK 38	9/26/2012 12:25	MW12-06752		4.577	57.54	0.77	7.34	25.74	8.98	91.02	<5	0.961	29.27
WEEK 39	10/5/2012 10:56	MW12-06977		4.275	54.46	0.83	7.37	32.24	8.94	91.06	<5	0.845	30.51
WEEK 34	9/7/2012 11:06	MW12-06241		4.344	60.4		7.86	27.91	10.25	89.75	<5	1.001	31.38
WEEK 36	9/19/2012 10:25	MW12-06548		4.857	56.57		7.06	28.65	8.57	91.43	<5	0.739	29.13
WEEK 38	9/26/2012 12:25	MW12-06752		4.577	57.54		7.34	25.74	8.98	91.02	<5	0.961	29.27
WEEK 39	10/5/2012 10:56	MW12-06977		4.275	54.46		7.37	32.24	8.94	91.06	<5	0.845	30.51