



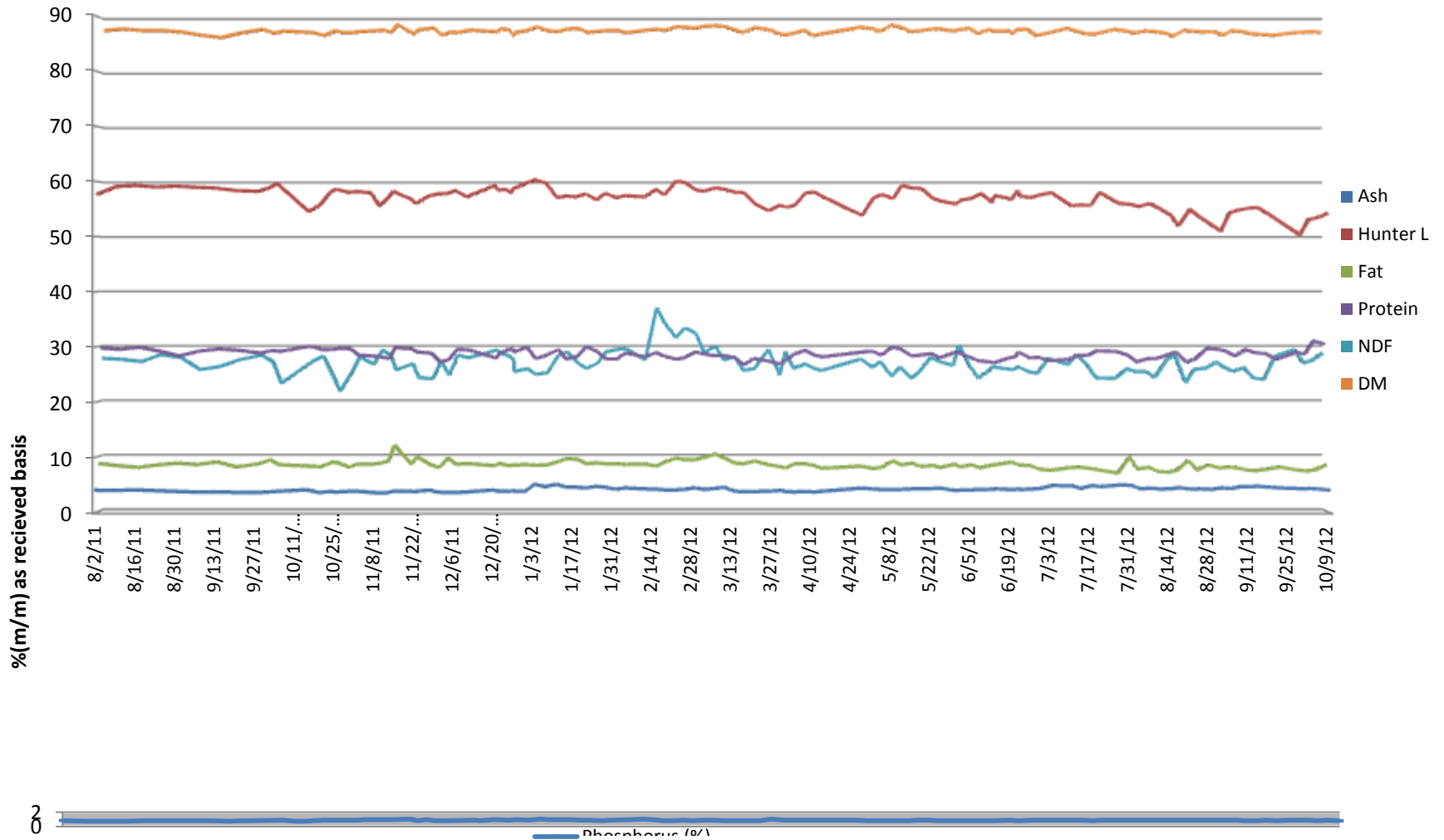
SGS Brookings  
 241 34th Ave  
 Brookings, SD 57006

# CARBON GREEN BIOENERGY

Woodbury, MI



5500 Cenex Drive  
 Inver Grove  
 Heights, MN 55077  
 PH. 800-769-1066

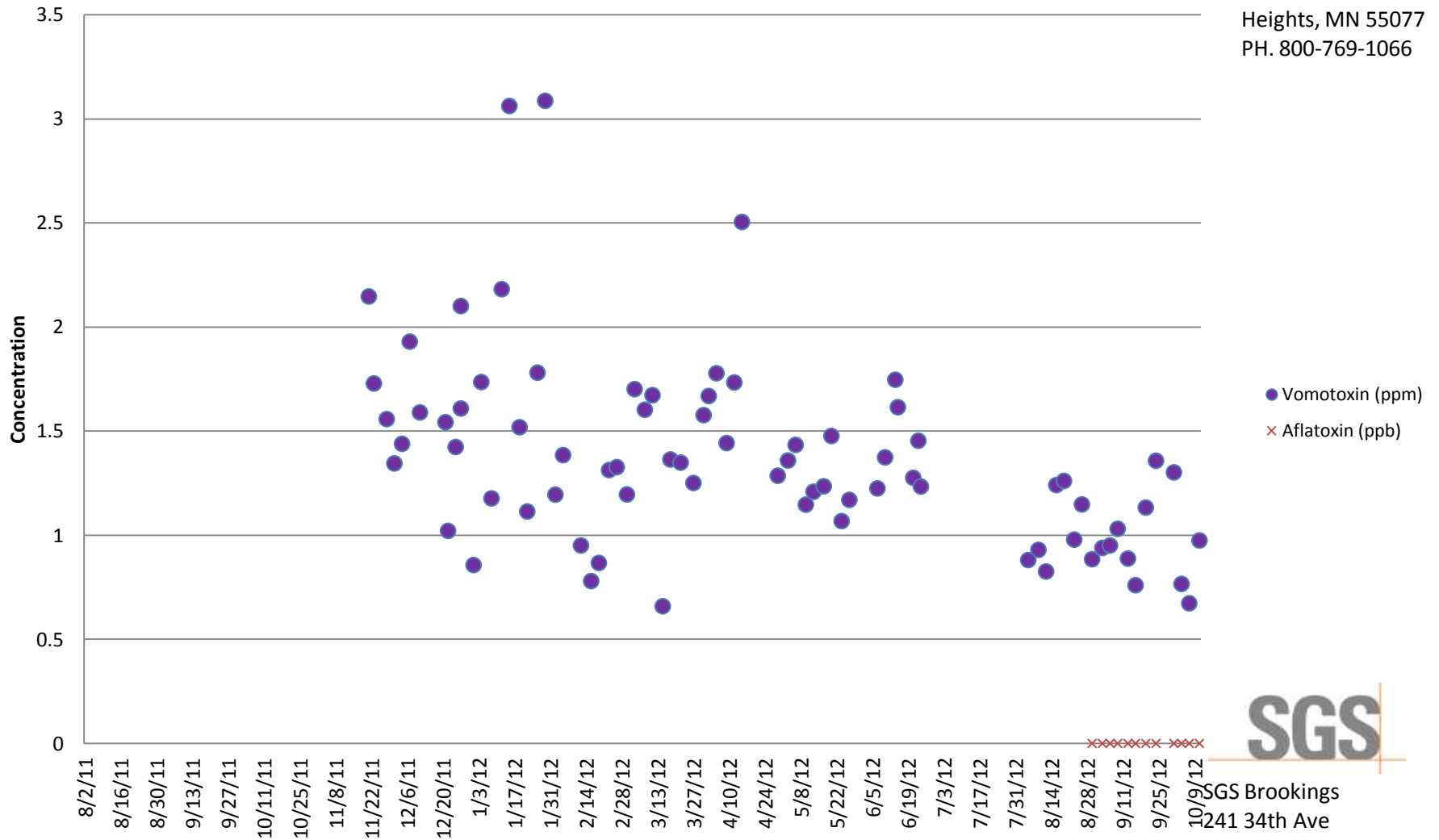


# CARBON GREEN BIOENERGY

Woodbury, MI



Inver Grove Heights, MN 55077  
PH. 800-769-1066



**SGS**  
SGS Brookings  
241 34th Ave  
Brookings, SD 57006

**Customer:** CARBON GREEN BIOENERGY

**Address:** 7795 SADDLEBAG LAKE ROAD  
LAKE ODESSA  
UNITED STATES

Analyte				Crude ash as received	Hunter L Value	Phosphorus	Crude fat as is	NDF as received	Moisture	Drymatter	Aflatoxin	DON (Vomitoxin)	Crude protein as received
Scheme				Ash Content: Feed	Hunter Color	Minerals: As Received (No Drymatter)	Fat content in Animal Feed	NDF	Moisture Content	Moisture Content	Aflatoxin by ELISA	Vomitoxin (DON) by ELISA	Protein Content
Detection Limit						0.0063					5	0.5	
Unit	Received	Order		%(m/m)		%(m/m)	%(m/m)	%	%(m/m)	%(m/m)	PPB	PPM	%(m/m)
0802-080911	8/2/11	MW11-03217		4.175	57.64	0.84	8.76	27.79	12.17	87.83			29.73
0809-081611	8/9/11	MW11-03216		4.116	59.08	0.73	8.35	27.59	11.87	88.13			29.46
0816-082311	8/16/11	MW11-03215		4.23	59.24	0.75	8.05	27.19	12.17	87.83			29.85
0823-083011	8/23/11	MW11-03214		4.089	58.97	0.76	8.51	28.45	12.17	87.83			29.14
0830-090611	8/30/11	MW11-03582		3.961	59.14	0.83	8.82	27.95	12.43	87.57			28.28
0906-091311	9/6/11	MW11-03583		3.841	58.93	0.81	8.57	25.72	13.03	86.97			29.12
0913-092011	9/13/11	MW11-03584		3.868	58.78	0.8	9.06	26.29	13.45	86.55			29.54
0920-092711	9/20/11	MW11-03759		3.782	58.34	0.82	8.13	27.51	12.59	87.41			29.3
0928-092911	9/28/11	MW11-03758		3.729	58.19	0.76	8.73	28.38	11.92	88.08			28.8
DDGS 1002-100311	10/2/11	MW11-03860		3.836	58.78	0.78	9.43	27.14	12.67	87.33			29.23
1005-100611	10/5/11	MW11-03929		3.947	59.54	0.77	8.56	23.24	12.25	87.75			29.1
1016-101711	10/16/11	MW11-04294		4.24	54.56	0.86	8.28	27.17	12.53	87.47			30.05
1020-102111	10/20/11	MW11-04295		3.743	55.68	0.71	8.19	28.17	13.09	86.91			29.43
1024-102511	10/24/11	MW11-04376		3.92	58.22	0.72	9	24.05	12.15	87.85			29.45
1026-102711	10/26/11	MW11-04377		3.833	58.55	0.8	8.88	21.76	12.51	87.49			29.65
1030-103111	10/30/11	MW11-04526		3.937	58.01	0.87	8.11	25.1	12.53	87.47			29.57
1102-110311	11/2/11	MW11-04586		4.012	58.14	0.9	8.65	28.09	12.32	87.68			28.43
1107-110811	11/7/11	MW11-04673		3.783	57.94	0.91	8.62	26.66	12.24	87.76			28.23
1110-111111	11/10/11	MW11-04860		3.662	55.54	0.85	8.81	29.24	12.07	87.93			28.07
1113-111411	11/13/11	MW11-04861		3.681	57	0.94	9.21	28.42	12.49	87.51			27.8
1115-111611	11/15/11	MW11-04909		3.976	58.18	0.92	12.1	25.66	11.07	88.93			29.81

**Customer:** CARBON GREEN BIOENERGY

**Address:** 7795 SADDLEBAG LAKE ROAD  
LAKE ODESSA  
UNITED STATES

Analyte				Crude ash as received	Hunter L Value	Phosphorus	Crude fat as is	NDF as received	Moisture	Drymatter	Aflatoxin	DON (Vomitoxin)	Crude protein as received
Scheme				Ash Content: Feed	Hunter Color	Minerals: As Received (No Drymatter)	Fat content in Animal Feed	NDF	Moisture Content	Moisture Content	Aflatoxin by ELISA	Vomitoxin (DON) by ELISA	Protein Content
Detection Limit						0.0063					5	0.5	
Unit	Received	Order		%(m/m)		%(m/m)	%(m/m)	%	%(m/m)	%(m/m)	PPB	PPM	%(m/m)
1121-112211	11/21/11	MW11-05180		3.995	56.82	0.98	8.67	26.8	12.76	87.24		2.147	29.54
1123-112411	11/23/11	MW11-05181		3.913	56.04	0.97	9.93	24.26	11.99	88.01		1.729	28.99
1128-112911	11/28/11	MW11-05182		4.184	57.41	1.06	8.54	24.05	11.68	88.32		1.558	28.74
1201-120211	12/1/11	MW11-05234		3.813	57.74	0.83	8	27.21	13.02	86.98		1.345	27.19
1204-120511	12/4/11	MW11-05235		3.731	57.78	0.93	9.79	24.7	12.43	87.57		1.439	27.55
1207-120811	12/7/11	MW11-05472		3.745	58.29	0.82	8.63	28.36	12.53	87.47		1.93	29.42
1211-121211	12/11/11	MW11-05473		3.83	57.2	0.81	8.74	27.89	12.08	87.92		1.59	29.39
1221-122211	12/21/11	MW12-00002		4.208	59.28	0.89	8.35	29.3	12.38	87.62		1.543	27.86
12228-122911	12/22/11	MW12-00150		3.993	58.43	0.83	8.81	28.72	11.81	88.19		1.021	28.66
1225-122611	12/25/11	MW12-00003		3.959	58.5	0.91	8.45	28.33	11.98	88.02		1.424	29.37
1214-121511	12/27/11	MW11-05611		4.013	57.83	0.95	8.38	27.49	13.14	86.86		2.101	29.6
1218-121911	12/27/11	MW11-05612		4.036	58.53	0.93	8.47	25.37	12.54	87.46		1.609	28.94
0101-010212	1/1/12	MW12-00151		3.969	59.66	0.88	8.56	25.85	12.11	87.89		0.857	29.86
0104-010512	1/4/12	MW12-00273		5.246	60.26	0.94	8.44	24.82	11.46	88.54		1.736	27.77
0108-010912	1/8/12	MW12-00274		4.8	59.7	0.88	8.47	25.14	12.19	87.81		1.177	28.41
0112-011312	1/12/12	MW12-00427		5.232	57.05	1.01	9.05	28.34	12.37	87.63		2.182	29.41
0115-011612	1/15/12	MW12-00428		4.743	57.35	0.94	9.64	28.96	11.85	88.15		3.062	27.69
0119-012012	1/19/12	MW12-00629		4.703	57.18	0.94	9.52	26.88	11.75	88.25		1.519	28.21
0122-012312	1/22/12	MW12-00630		4.546	57.77	0.94	8.72	25.92	12.47	87.53		1.114	30.01
0126-012712	1/26/12	MW12-00769		4.863	56.65	0.87	8.86	26.9	12.32	87.68		1.781	29.04
0129-013012	1/29/12	MW12-00770		4.713	57.83	0.87	8.72	28.97	12.15	87.85		3.087	27.71

**Customer:** CARBON GREEN BIOENERGY

**Address:** 7795 SADDLEBAG LAKE ROAD  
LAKE ODESSA  
UNITED STATES

Analyte				Crude ash as received	Hunter L Value	Phosphorus	Crude fat as is	NDF as received	Moisture	Drymatter	Aflatoxin	DON (Vomitoxin)	Crude protein as received
Scheme				Ash Content: Feed	Hunter Color	Minerals: As Received (No Drymatter)	Fat content in Animal Feed	NDF	Moisture Content	Moisture Content	Aflatoxin by ELISA	Vomitoxin (DON) by ELISA	Protein Content
Detection Limit						0.0063					5	0.5	
Unit	Received	Order		%(m/m)		%(m/m)	%(m/m)	%	%(m/m)	%(m/m)	PPB	PPM	%(m/m)
0202-020312	2/2/12	MW12-00920		4.315	57.05	0.81	8.74	29.41	12.13	87.87		1.195	27.73
0205-020612	2/5/12	MW12-00921		4.582	57.41	0.9	8.59	29.57	12.54	87.46		1.385	28.81
0212-021312	2/12/12	MW12-01200		4.398	57.19	0.95	8.67	27.51	12.12	87.88		0.951	28.1
0216-021712	2/16/12	MW12-01199		4.358	58.55	1.02	8.3	37	11.91	88.09		0.78	28.89
0219-022012	2/19/12	MW12-01198		4.226	57.52	0.98	9	34.15	12.11	87.89		0.867	28.19
0223-022412	2/23/12	MW12-01478		4.218	60.01	0.79	9.75	31.54	11.49	88.51		1.313	27.69
0226-022712	2/26/12	MW12-01479		4.324	59.84	0.81	9.44	33.35	11.54	88.46		1.327	27.93
0301-030212	3/1/12	MW12-01480		4.613	58.47	0.9	9.5	32.42	11.74	88.26		1.196	28.99
0304-030512	3/4/12	MW12-01667		4.298	58.24	0.84	9.85	28.81	11.36	88.64		1.702	28.58
0308-030912	3/8/12	MW12-01668		4.49	58.81	0.85	10.52	29.99	11.26	88.74		1.603	28.31
0311-031212	3/11/12	MW12-01669		4.695	58.57	0.86	9.76	27.5	11.37	88.63		1.673	28.32
31512	3/15/12	MW12-02000		3.962	58.03	0.78	8.85	28.06	12.02	87.98		0.659	27.93
31812	3/18/12	MW12-02001		3.903	57.97	0.79	8.7	25.56	12.54	87.46		1.364	26.67
32212	3/22/12	MW12-02002		3.931	55.96	0.83	9.22	25.93	11.61	88.39		1.349	27.81
32712	3/27/12	MW12-02003		3.973	54.67	0.81	8.52	29.38	11.98	88.02		1.251	27.31
33112	3/31/12	MW12-02165		4.126	55.7	1	8.18	24.74	12.74	87.26		1.577	26.83
40212	4/2/12	MW12-02166		3.912	55.28	0.94	7.96	28.96	12.96	87.04		1.669	27.41
40512	4/5/12	MW12-02501		3.851	55.65	0.88	8.72	25.9	12.67	87.33		1.778	28.58
40912	4/9/12	MW12-02502		3.928	57.9	0.89	8.69	26.76	12.07	87.93		1.443	29.29
41212	4/12/12	MW12-02503		3.826	58.06	0.91	8.4	25.99	13.07	86.93		1.734	28.49
41512	4/15/12	MW12-02504		3.988	57.2	0.88	7.91	25.55	12.76	87.24		2.505	28.09

**Customer:** CARBON GREEN BIOENERGY

**Address:** 7795 SADDLEBAG LAKE ROAD  
LAKE ODESSA  
UNITED STATES

Analyte				Crude ash as received	Hunter L Value	Phosphorus	Crude fat as is	NDF as received	Moisture	Drymatter	Aflatoxin	DON (Vomitoxin)	Crude protein as received
Scheme				Ash Content: Feed	Hunter Color	Minerals: As Received (No Drymatter)	Fat content in Animal Feed	NDF	Moisture Content	Moisture Content	Aflatoxin by ELISA	Vomitoxin (DON) by ELISA	Protein Content
Detection Limit						0.0063					5	0.5	
Unit	Received	Order		%(m/m)		%(m/m)	%(m/m)	%	%(m/m)	%(m/m)	PPB	PPM	%(m/m)
42912	4/29/12	MW12-03011		4.555	53.82	0.87	8.28	27.65	11.56	88.44		1.286	28.94
50312	5/3/12	MW12-03012		4.35	56.98	0.8	7.84	26.18	11.79	88.21		1.359	29.14
50612	5/6/12	MW12-03013		4.283	57.64	0.84	8.05	27.19	12.33	87.67		1.434	28.36
51012	5/10/12	MW12-03314		4.311	56.86	0.79	9.25	24.49	11.17	88.83		1.147	29.89
51312	5/13/12	MW12-03315		4.317	59.24	0.8	8.53	26.24	11.47	88.53		1.209	29.51
51712	5/17/12	MW12-03316		4.418	58.76	0.78	8.82	24.1	12.34	87.66		1.235	28.26
52012	5/20/12	MW12-03562		4.402	58.71	0.85	8.19	25.41	12.22	87.78		1.477	28.42
52412	5/24/12	MW12-03563		4.475	56.91	0.87	8.41	27.98	11.92	88.08		1.068	28.71
52712	5/27/12	MW12-03564		4.47	56.4	0.84	8.05	27.19	11.81	88.19		1.17	27.92
60112	6/1/12	MW12-03807		4.096	55.89	0.84	8.61	26.47	12.24	87.76			28.8
60312	6/3/12	TR12-00221		4.216	56.59	0.83	8.12	30.21	12.03	87.97			28.81
60712	6/7/12	MW12-03984		4.24	56.96	0.84	8.54	26.29	11.71	88.29		1.225	27.95
61012	6/10/12	MW12-03985		4.28	57.83	0.83	7.98	24.16	12.71	87.29		1.374	27.34
61412	6/14/12	MW12-04393		4.34	56.2	0.81	8.45	25.61	11.97	88.03		1.747	27.17
61412	6/15/12	MW12-04394		4.419	57.46	0.83	8.49	26.25	12.23	87.77		1.615	27
62112	6/21/12	MW12-04395		4.253	56.75	0.85	9.01	25.78	12.24	87.76		1.276	27.94
62312	6/23/12	MW12-04397		4.391	58.35	0.84	8.68	25.77	12.61	87.39		1.454	28.14
62412	6/24/12	MW12-04396		4.287	57.29	0.82	8.48	26.27	11.93	88.07		1.234	28.98
62812	6/28/12	MW12-05037		4.391	57.08	0.88	8.4	25.32	11.97	88.03			27.92
70112	7/1/12	MW12-05038		4.491	57.55	0.91	7.73	25.01	13.05	86.95			28
70512	7/5/12	MW12-05039		5.015	57.94	0.85	7.53	27.76	12.64	87.36			27.4

**Customer:** CARBON GREEN BIOENERGY

**Address:** 7795 SADDLEBAG LAKE ROAD  
LAKE ODESSA  
UNITED STATES

Analyte				Crude ash as received	Hunter L Value	Phosphorus	Crude fat as is	NDF as received	Moisture	Drymatter	Aflatoxin	DON (Vomitoxin)	Crude protein as received
Scheme				Ash Content: Feed	Hunter Color	Minerals: As Received (No Drymatter)	Fat content in Animal Feed	NDF	Moisture Content	Moisture Content	Aflatoxin by ELISA	Vomitoxin (DON) by ELISA	Protein Content
Detection Limit						0.0063					5	0.5	
Unit	Received	Order		%(m/m)		%(m/m)	%(m/m)	%	%(m/m)	%(m/m)	PPB	PPM	%(m/m)
71212	7/12/12	MW12-05040		4.934	55.58	0.91	7.99	26.63	11.75	88.25			27.65
71512	7/15/12	MW12-05041		4.506	55.7	0.87	8.11	28.49	12.2	87.8			28.37
71912	7/19/12	MW12-05532		4.985	55.67	0.83	7.87	26.45	12.74	87.26			28.39
72212	7/22/12	MW12-05534		4.83	57.94	0.86	7.63	24.2	12.77	87.23			29.18
72912	7/29/12	MW12-05535		5.105	56.03	0.88	6.98	24.12	11.95	88.05			29.06
80212	8/2/12	MW12-05536		5.038	55.82	0.86	9.94	25.91	12.22	87.78			28.39
80512	8/5/12	MW12-05769		4.404	55.45	0.9	7.77	25.37	12.57	87.43		0.881	27.17
80912	8/9/12	MW12-05770		4.549	56.01	0.9	8.07	25.34	12.25	87.75		0.93	27.77
81212	8/12/12	MW12-05771		4.363	55.11	0.87	7.36	24.29	12.32	87.68		0.826	27.8
81612	8/16/12	MW12-05924		4.437	54	0.89	7.17	27.29	12.6	87.4		1.241	28.41
81912	8/19/12	MW12-05925		4.602	51.93	0.89	7.57	28.56	13.16	86.84		1.261	28.97
82312	8/23/12	MW12-06085		4.355	54.9	0.87	9.3	23.3	12.12	87.88		0.979	27.11
82612	8/26/12	MW12-06086		4.404	53.73	0.89	7.61	25.72	12.27	87.73		1.148	27.76
83012	8/30/12	MW12-06344		4.308	52.32	0.86	8.51	25.98	12.4	87.6	<5	0.885	29.6
90312	9/3/12	MW12-06345		4.588	50.98	0.9	7.96	27.08	12.44	87.56	<5	0.939	29.47
90612	9/6/12	MW12-06346		4.444	54.31	0.87	8.12	26.12	12.99	87.01	<5	0.951	29.13
90912	9/9/12	MW12-06718		4.772	54.76	0.84	8	25.42	12.17	87.83	<5	1.031	28.3
91312	9/13/12	MW12-06719		4.831	55.15	0.84	7.55	26.04	12.37	87.63	<5	0.888	29.4
91612	9/16/12	MW12-06720		4.859	55.25	0.85	7.5	24.22	12.75	87.25	<5	0.76	28.88
92012	9/20/12	MW12-06721		4.692	54.01	0.84	7.74	23.91	12.9	87.1	<5	1.133	28.67
92412	9/24/12	MW12-06979		4.559	52.64	0.88	8.12	28.21	13.02	86.98	<5	1.358	27.72

**Customer:** CARBON GREEN BIOENERGY

**Address:** 7795 SADDLEBAG LAKE ROAD  
LAKE ODESSA  
UNITED STATES

Analyte				Crude ash as received	Hunter L Value	Phosphorus	Crude fat as is	NDF as received	Moisture	Drymatter	Aflatoxin	DON (Vomitoxin)	Crude protein as received
Scheme				Ash Content: Feed	Hunter Color	Minerals: As Received (No Drymatter)	Fat content in Animal Feed	NDF	Moisture Content	Moisture Content	Aflatoxin by ELISA	Vomitoxin (DON) by ELISA	Protein Content
Detection Limit						0.0063					5	0.5	
Unit	Received	Order		%(m/m)		%(m/m)	%(m/m)	%	%(m/m)	%(m/m)	PPB	PPM	%(m/m)
100112	10/1/12	MW12-06980		4.434	50.33	0.88	7.57	29.31	12.57	87.43	<5	1.302	28.94
100412	10/4/12	MW12-07253		4.476	53.09	0.84	7.41	26.94	12.47	87.53	<5	0.766	28.63
100712	10/7/12	MW12-07254		4.369	53.39	0.85	7.62	27.36	12.36	87.64	<5	0.673	30.96
101112	10/11/12	MW12-07255		4.174	54.22	0.78	8.54	28.73	12.48	87.52	<5	0.975	30.43