



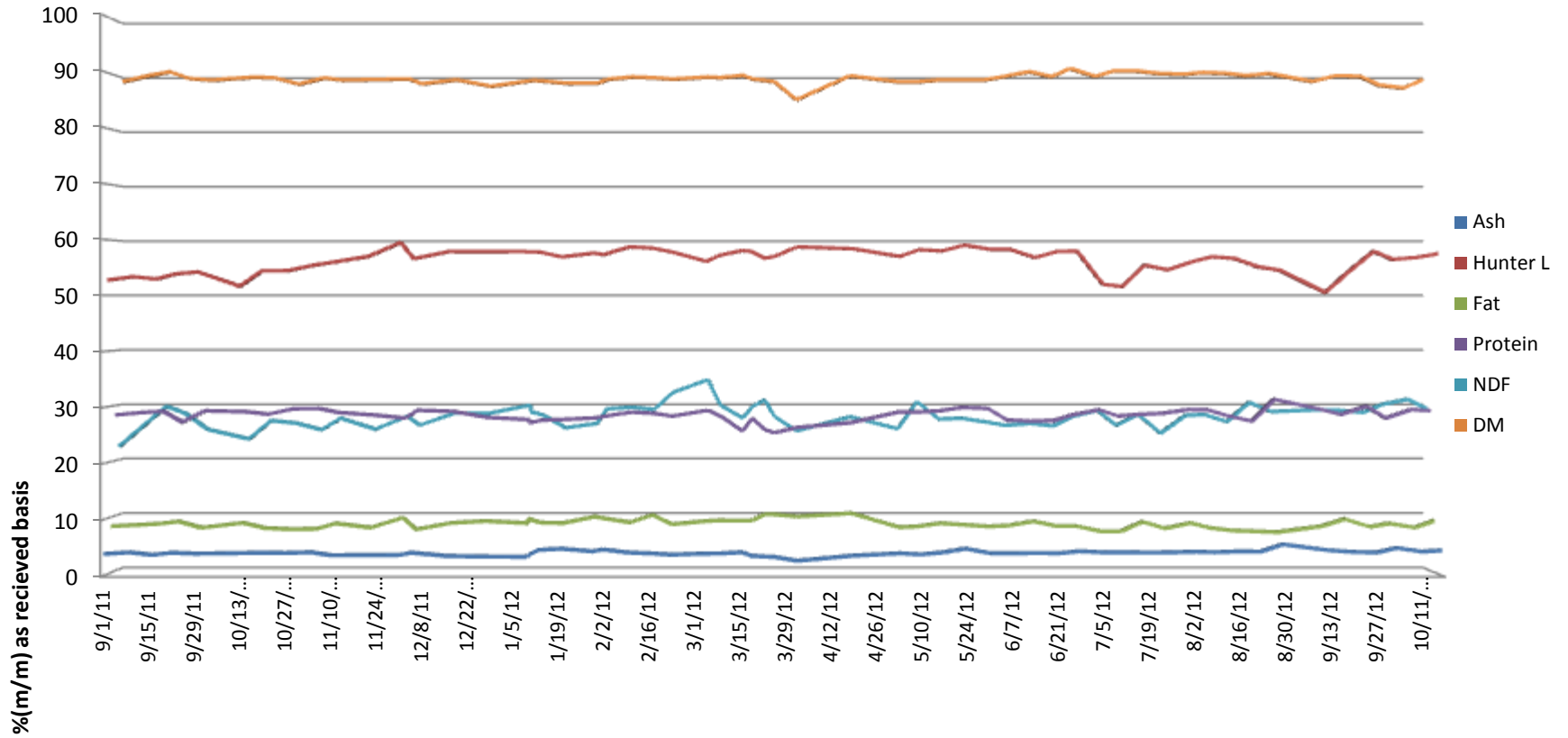
SGS Brookings  
 241 34th Ave  
 Brookings, SD 57006

# CARDINAL ETHANOL

Union City, IN



5500 Cenex Drive  
 Inver Grove  
 Heights, MN 55077  
 PH. 800-769-1066

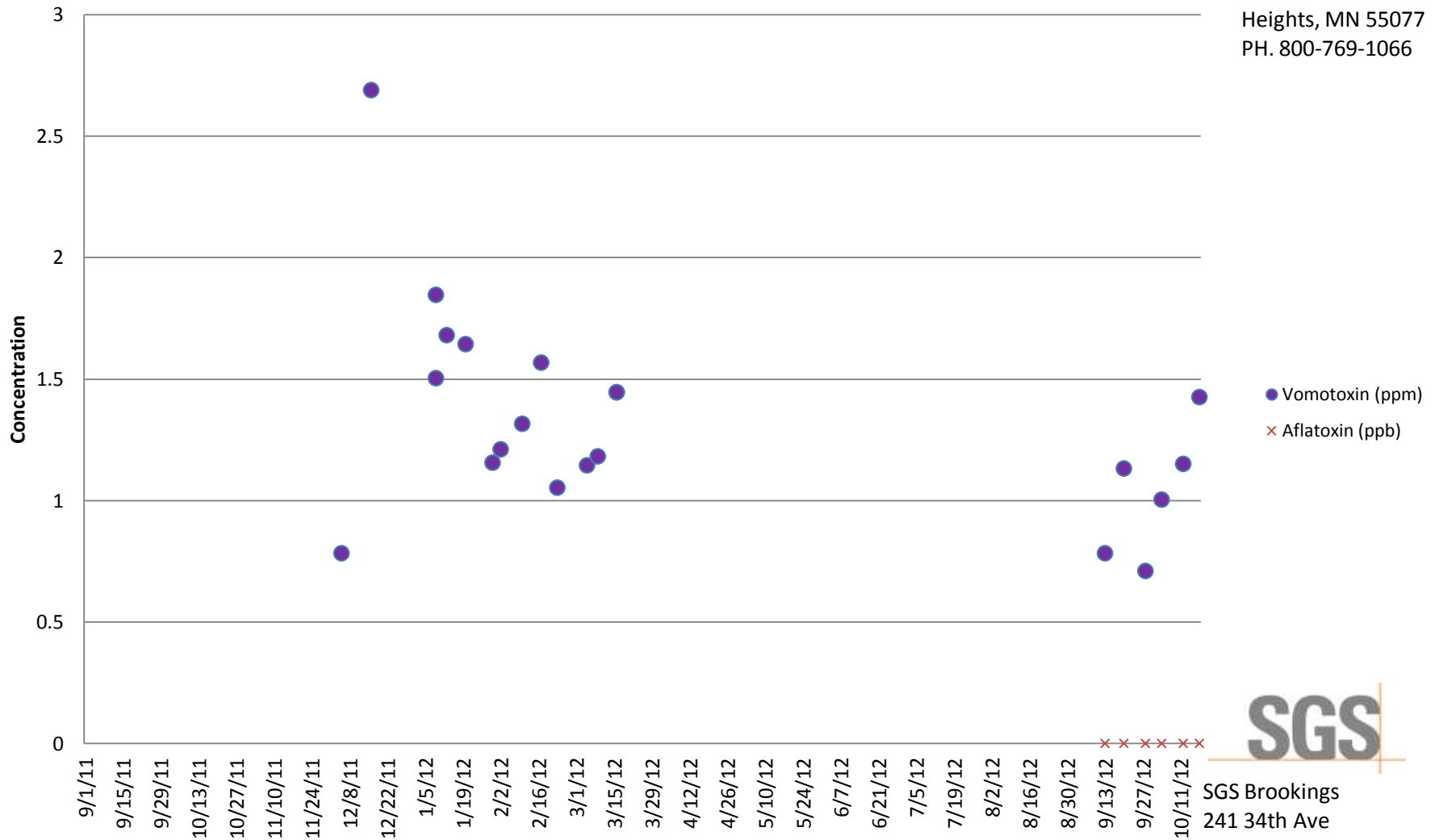


# CARDINAL ETHANOL

Union City, IN



Inver Grove Heights, MN 55077  
PH. 800-769-1066



**SGS**  
SGS Brookings  
241 34th Ave  
Brookings, SD 57006

**Customer:** CARDINAL ETHANOL

**Address:** 1554 N 600 EAST  
UNION CITY, IN  
UNITED STATES

Analyte				Crude ash as received	Hunter L Value	Phosphorus	Crude fat as is	NDF as received	Moisture	Drymatter	Aflatoxin	DON (Vomitoxin)	Crude protein as received
Scheme				Ash Content: Feed	Hunter Color	Minerals: As Received (No Drymatter)	Fat content in Animal Feed	NDF	Moisture Content	Moisture Content	Aflatoxin by ELISA	Vomitoxin (DON) by ELISA	Protein Content
Detection Limit						0.0063					5	0.5	
Unit	Received	Order		%(m/m)		%(m/m)	%(m/m)	%	%(m/m)	%(m/m)	PPB	PPM	%(m/m)
08/22/11-08/26/11	9/1/11	MW11-03110		3.938	52.75	0.81	8.4	22.46	10.81	89.19			28.32
08/29/11-09/02/11	9/9/11	MW11-03267		4.214	53.37	0.84	8.63	26.4	9.72	90.28			28.76
09/05/11 TO 09/09/11	9/16/11	MW11-03401		3.763	52.94	0.78	8.85	29.79	8.99	91.01			29.01
09/12/11 TO 09/16/11	9/22/11	MW11-03519		4.155	53.85		9.26	28.47	10.19	89.81			27.03
09/19/11 TO 09/23/1	9/29/11	MW11-03669		3.997	54.22	0.76	8.12	25.58	10.51	89.49			29.09
10/03/11 TO 10/07/11	10/12/11	MW11-03959		4.079	51.65	0.82	9	23.82	9.98	90.02			28.91
10/10/11 TO 10/14/11	10/19/11	MW11-04124		4.157	54.44	0.85	8.06	27.17	10.06	89.94			28.48
10/17/11-10/21/11	10/27/11	MW11-04289		4.109	54.45	0.86	7.86	26.71	11.24	88.76			29.46
10/24/11 TO 10/28/11	11/4/11	MW11-04477		4.232	55.44	0.92	7.93	25.49	10.11	89.89			29.49
10/31/11 TO 11/04/11	11/10/11	MW11-04622		3.701	55.96	0.89	8.91	27.6	10.51	89.49			28.78
11/7/11 TO 11/11/11	11/21/11	MW11-04841		3.729	57.01	0.71	8.14	25.61	10.38	89.62			28.33
11/14/11 TO 11/18/11	12/1/11	MW11-05028		3.744	59.49	0.56	9.97	27.97	10.3	89.7			27.75
11/21/11 TO 11/25/11	12/5/11	MW11-05122		4.154	56.58	0.95	7.81	26.35	11.19	88.81		0.783	29.18
12/05/11 TO 12/09/11	12/16/11	MW11-05458		3.573	57.88	0.79	8.98	28.54	10.45	89.55		2.69	28.97
12/12/11 TO 12/16/11	12/27/11	MW11-05609		3.476	57.86	0.85	9.33	28.52	11.63	88.37			27.88
12/26/11 TO 12/30/11	1/9/12	MW12-00161		3.429	57.89	0.82	8.94	30.01	10.58	89.42		1.847	27.49
12/19/11 TO 12/23/11	1/9/12	MW12-00162		3.336	57.84	0.8	9.76	28.8	10.54	89.46		1.504	26.89
01/02/12 TO 01/06/12	1/13/12	MW12-00298		4.637	57.79	0.88	9.04	28.19	10.69	89.31		1.681	27.39
01/09/12 TO 01/13/12	1/20/12	MW12-00475		4.872	56.91	0.89	8.96	25.87	11.09	88.91		1.644	27.52
01/16/12 TO 01/20/12	1/30/12	MW12-00650		4.398	57.59	0.85	10.14	26.65	11.07	88.93		1.156	27.8
01/23/12 TO 01/27/12	2/2/12	MW12-00760		4.738	57.33	0.77	9.79	29.32	10.36	89.64		1.211	28.11

**Customer:** CARDINAL ETHANOL

**Address:** 1554 N 600 EAST  
UNION CITY, IN  
UNITED STATES

Analyte				Crude ash as received	Hunter L Value	Phosphorus	Crude fat as is	NDF as received	Moisture	Drymatter	Aflatoxin	DON (Vomitoxin)	Crude protein as received
Scheme				Ash Content: Feed	Hunter Color	Minerals: As Received (No Drymatter)	Fat content in Animal Feed	NDF	Moisture Content	Moisture Content	Aflatoxin by ELISA	Vomitoxin (DON) by ELISA	Protein Content
Detection Limit						0.0063					5	0.5	
Unit	Received	Order		%(m/m)		%(m/m)	%(m/m)	%	%(m/m)	%(m/m)	PPB	PPM	%(m/m)
01/30/12 TO 02/03/12	2/10/12	MW12-00950		4.177	58.71	0.79	9.09	29.62	9.92	90.08		1.316	28.84
02/06/12 TO 02/10/12	2/17/12	MW12-01094		4.033	58.5	1.04	10.45	29.23	10.08	89.92		1.568	28.63
02/13/12 TO 02/17/12	2/23/12	MW12-01191		3.813	57.82	0.88	8.74	32.31	10.32	89.68		1.053	28.1
02/20/12, 02/23/12, 02/24/12	3/5/12	MW12-01397		4.002	56.1	0.84	9.35	34.65	9.94	90.06		1.145	29.17
02/27/12 TO 03/02/12	3/9/12	MW12-01533		4.022	57.18	0.8	9.45	30	10.05	89.95		1.182	28.16
03/05/12 TO 03/09/12	3/16/12			4.235	58.07	0.76	9.39	27.61	9.64	90.36		1.446	25.39
03/05/12 TO 03/09/12	3/16/12	MW12-01713		4.235	58.07	0.76	9.39	27.61	9.64	90.36		1.446	25.39
03/19/12 to 03/23/12 1	3/19/12	MW12-02038		3.59	57.84	0.74	9.43	29.72	10.29	89.71			27.7
03/12/12 to 03/16/12 1	3/23/12	MW12-01872		3.481	56.68	0.7	10.58	30.93	10.56	89.44			25.71
03/26/12 to 03/30/12 1	3/26/12	MW12-02195		3.393	56.97	0.72	10.53	27.95	10.8	89.2			25.09
04/02/12 to 04/06/12 1	4/2/12	MW12-02344		2.714	58.71	0.73	10.14	25.3	14.11	85.89			26.04
04/09/12 to 04/13/12 1	4/19/12	MW12-02525		3.622	58.39	0.78	10.74	27.89	9.73	90.27			26.93
04/23/12-04/27/12	5/4/12	MW12-02883		4.05	57.01	0.87	8.21	25.68	10.77	89.23			28.85
04/30/12 to 05/04/12 1	5/10/12	MW12-03015		3.839	58.21	0.81	8.38	30.64	10.82	89.18			28.86
05/07/12 to 05/11/12 1	5/17/12	MW12-03189		4.214	57.98	0.74	8.94	27.45	10.49	89.51			29.09
05/14/12 to 05/18/12 1	5/24/12	MW12-03365		4.881	59.01	0.78	8.66	27.61	10.47	89.53			29.7
05/21/12 to 05/25/12 1	6/1/12	MW12-03544		4.033	58.28	0.76	8.35	26.91	10.45	89.55			29.51
05/28/12 to 06/01/12 1	6/7/12	MW12-03732		4.034	58.28	0.78	8.52	26.3	9.83	90.17			27.43
06/04/12 to 06/08/12 1	6/15/12	MW12-03978		4.111	56.81	0.79	9.28	26.67	8.96	91.04			27.19
06/11/12 TO 06/15/12 1	6/22/12	MW12-04196		4.058	57.9	0.76	8.44	26.2	9.88	90.12			27.35
06/11/12 to 06/15/12 1	6/28/12	MW12-04390		4.414	57.94	0.74	8.45	27.92	8.39	91.61			28.39

**Customer:** CARDINAL ETHANOL

**Address:** 1554 N 600 EAST  
UNION CITY, IN  
UNITED STATES

Analyte				Crude ash as received	Hunter L Value	Phosphorus	Crude fat as is	NDF as received	Moisture	Drymatter	Aflatoxin	DON (Vomitoxin)	Crude protein as received
Scheme				Ash Content: Feed	Hunter Color	Minerals: As Received (No Drymatter)	Fat content in Animal Feed	NDF	Moisture Content	Moisture Content	Aflatoxin by ELISA	Vomitoxin (DON) by ELISA	Protein Content
Detection Limit						0.0063					5	0.5	
Unit	Received	Order		%(m/m)		%(m/m)	%(m/m)	%	%(m/m)	%(m/m)	PPB	PPM	%(m/m)
06/28/12 to 06/29/12 1	7/6/12	MW12-04619		4.217	51.98	0.78	7.48	29.03	9.83	90.17			29.28
07/02/12 to 07/06/12 1	7/12/12	MW12-04812		4.243	51.62	0.84	7.45	26.3	8.79	91.21			28.13
06/18/12 to 06/22/12 1	7/19/12	MW12-05018		4.172	55.45	0.86	9.21	28.29	8.82	91.18			28.45
07/16/12 to 07/20/12 1	7/26/12	MW12-05206		4.206	54.59	0.87	8.01	24.87	9.28	90.72			28.62
07/23/12 to 07/27/12 1	8/3/12	MW12-05409		4.333	56.1	0.85	8.98	28.16	9.44	90.56			29.31
07/30/12 to 08/03/12 1	8/9/12	MW12-05573		4.238	56.95	0.83	8.1	28.25	9.11	90.89			29.27
08/06/12 to 08/10/12 1	8/16/12	MW12-05732		4.377	56.62	0.84	7.62	26.97	9.25	90.75			28.09
08/13/12 to 08/17/12 1	8/23/12	MW12-05901		4.346	55.16	0.83	7.48	30.5	9.69	90.31			27.22
8/20/12-8/24/12	8/30/12	MW12-06048		5.64	54.51	0.86	7.32	28.81	9.29	90.71			31.17
09/03/12 to 09/07/12 1	9/13/12	MW12-06366		4.594	50.53	0.88	8.41	29.14	10.76	89.24	<5	0.783	29.43
09/10/12 to 09/14/12 1	9/20/12	MW12-06589		4.299	54.11	0.85	9.7	29.09	9.73	90.27	<5	1.132	28.44
09/17/12 to 09/21/12 1	9/28/12	MW12-06810		4.201	57.91	0.77	8.31	28.65	9.8	90.2	<5	0.71	29.93
09/24/12 to 09/28/12 1	10/4/12	MW12-06946		5	56.45	0.87	8.89	30.14	11.42	88.58	<5	1.004	27.75
07/09/12 to 07/13/12 1	10/12/12	MW12-07154		4.339	56.85	0.83	8.16	31.06	11.95	88.05	<5	1.151	29.32
10/08/12 to 10/12/12 1	10/18/12	MW12-07305		4.573	57.49	0.87	9.38	29.34	10.42	89.58	<5	1.426	29.1