



COMMODITY SPECIALISTS COMPANY

Agricultural Commodity Experts

www.csc-world.com

Steve Markham

Sean Broderick Jim Montbriand Matt Fitzthum

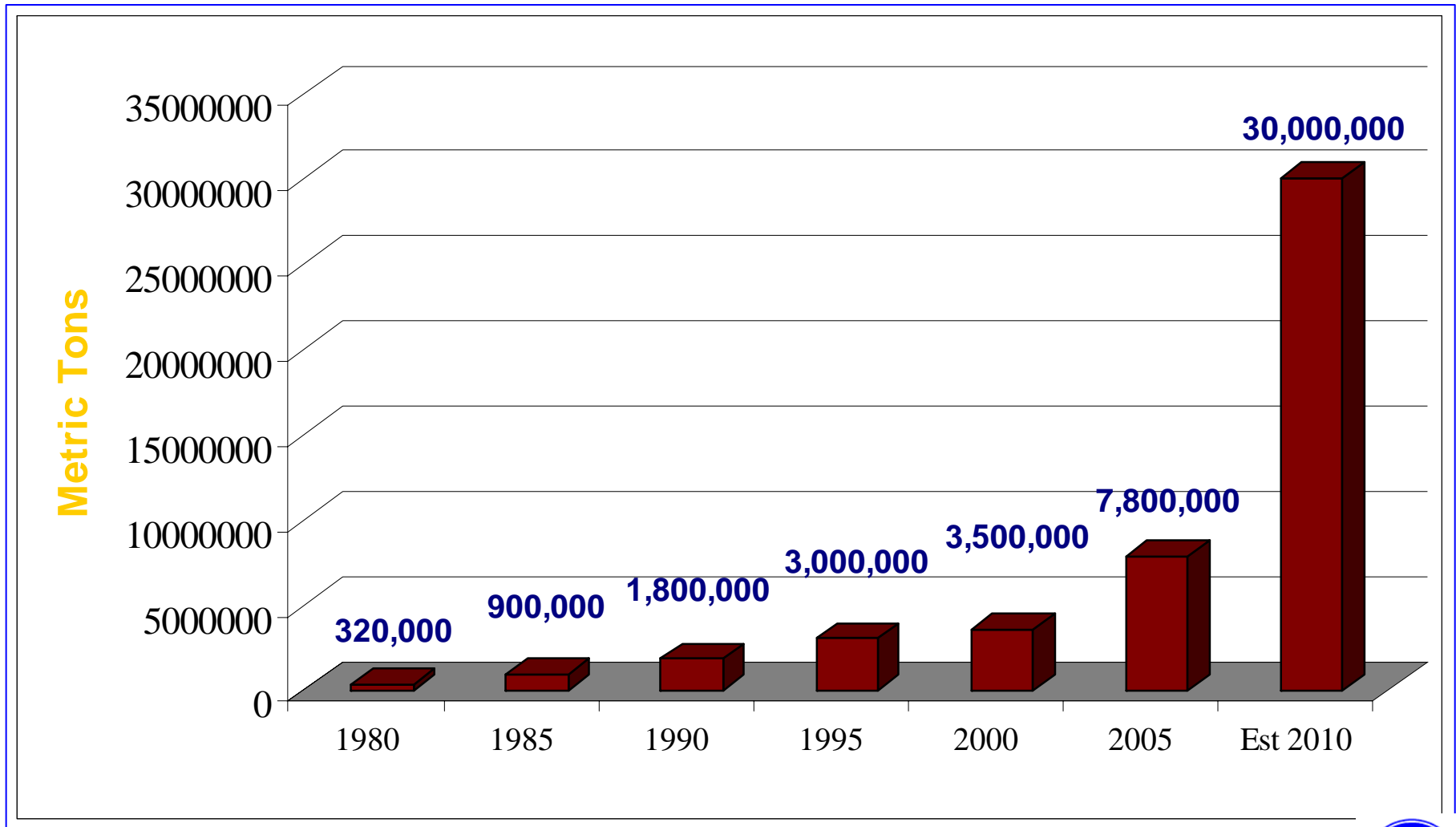
400 So. 4th St., 310 Grain Exchange Bldg., Mpls., MN 55415

612-330-9130 1-800-769-1066

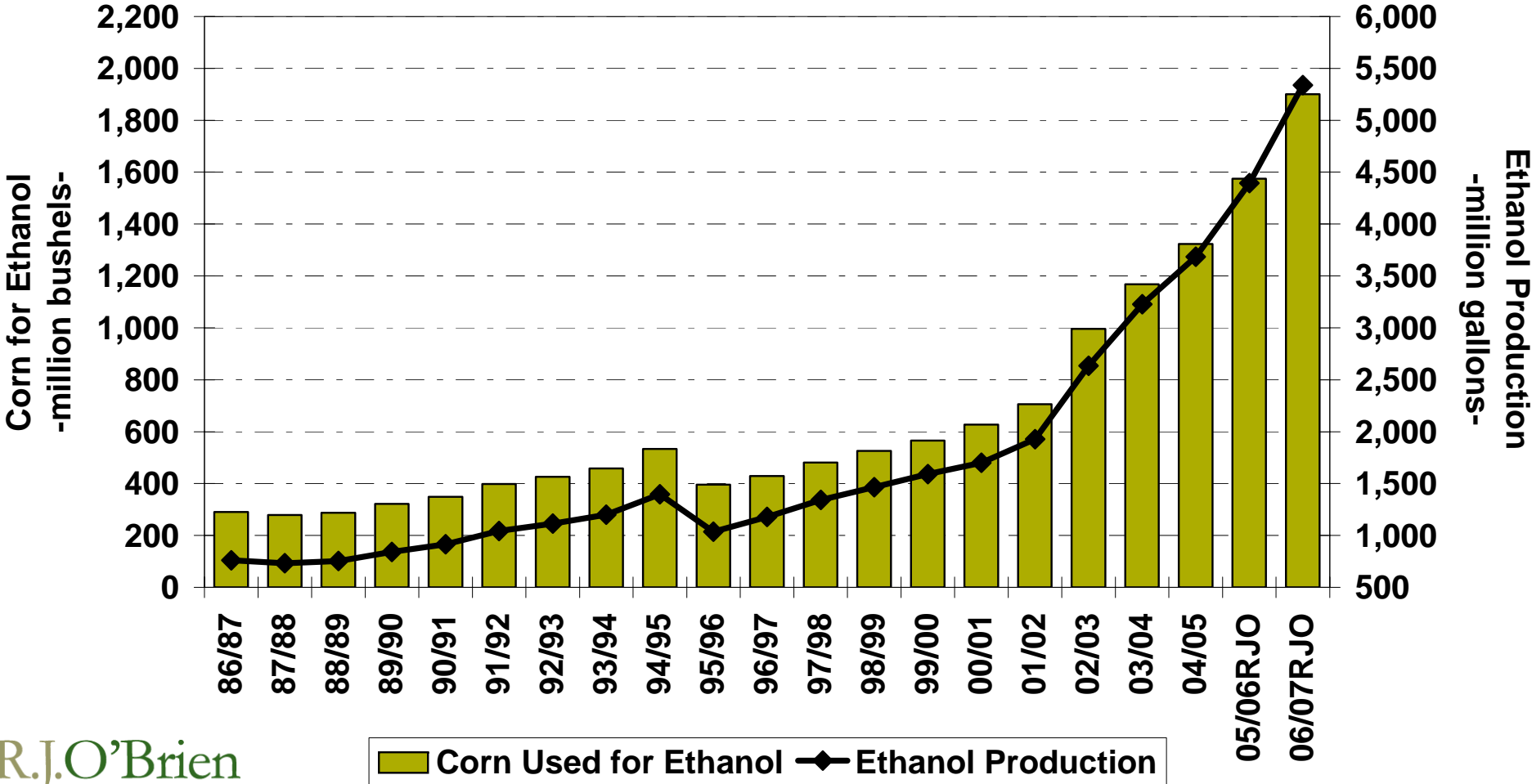
smarkham@csc-world.com



North American DDGS Production



U.S. Corn for Ethanol Production

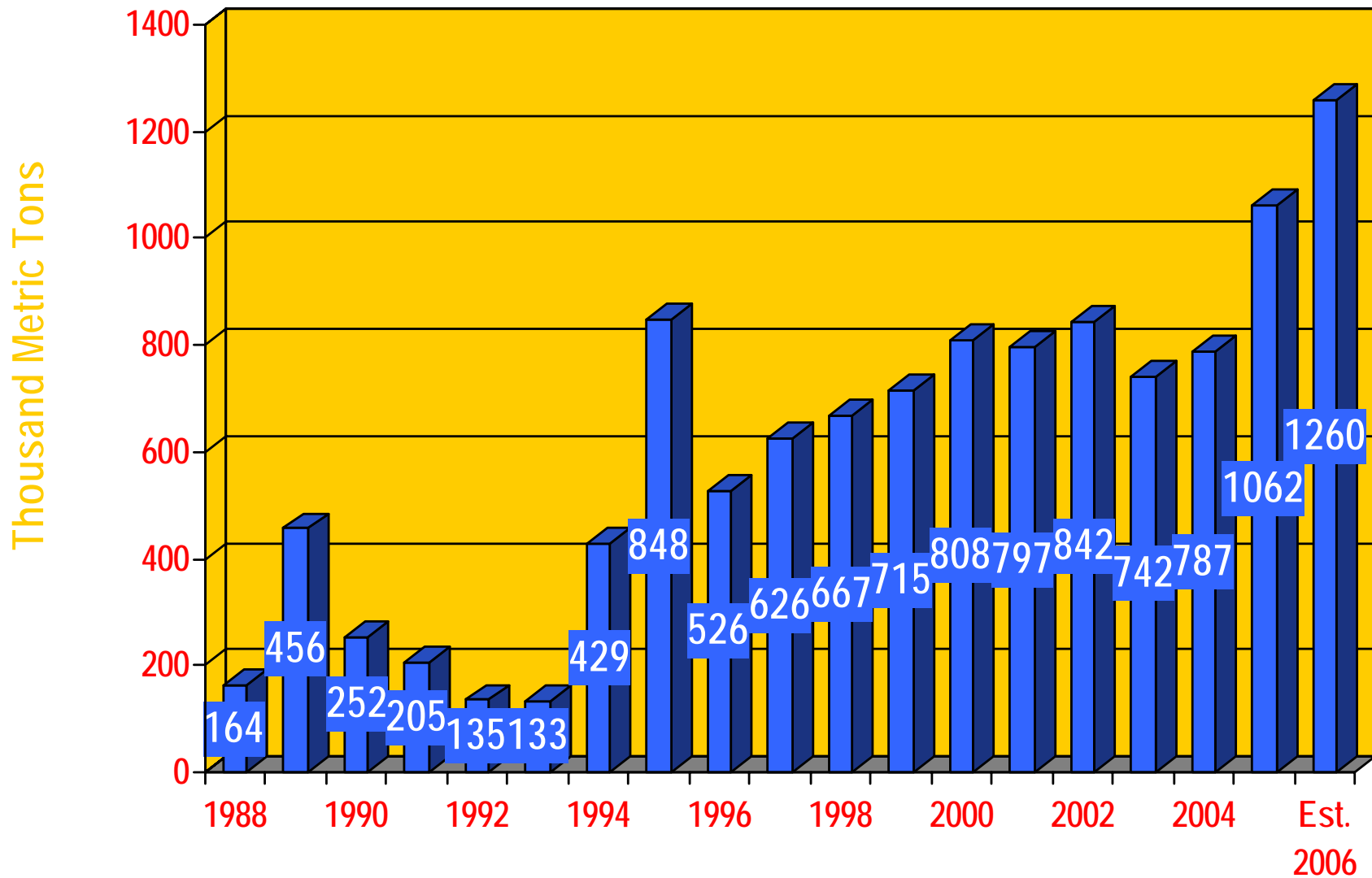


R.J.O'Brien



CSC 2006

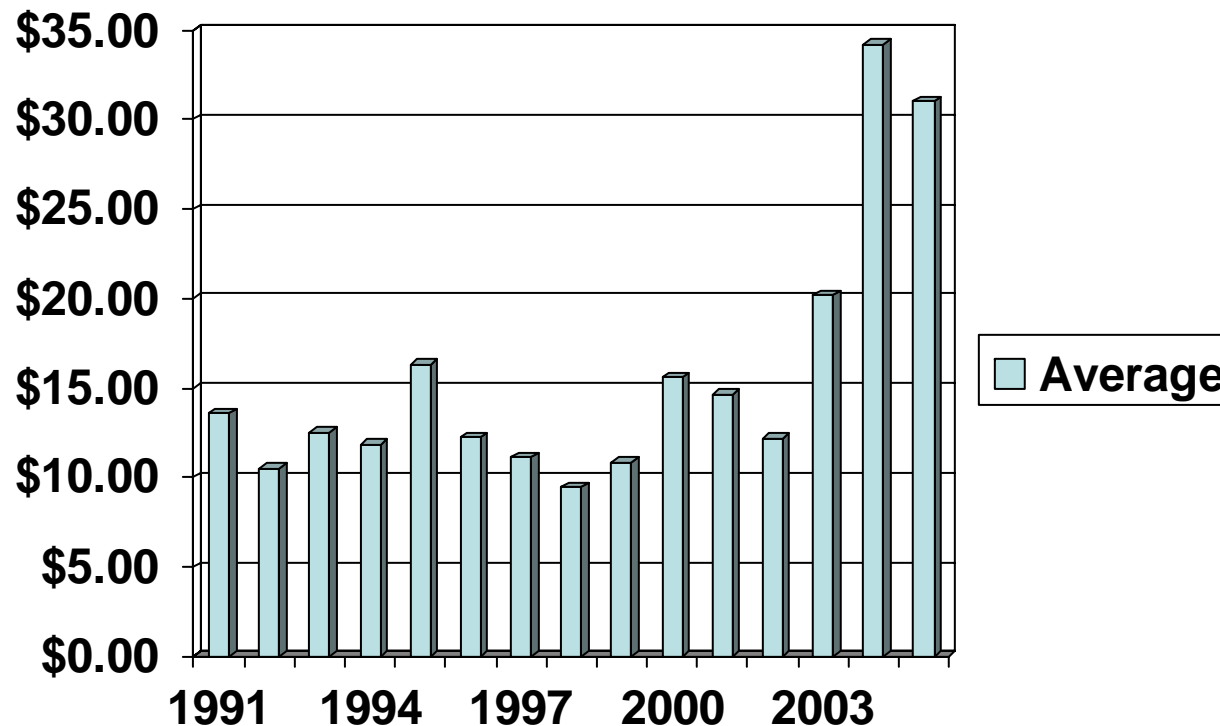
U.S. DDGS Exports 1988-2006



UNITED STATES DEPARTMENT OF AGRICULTURE										
FOREIGN AGRICULTURAL SERVICE										
EXPORT BY COUNTRY AND YEAR										
AREA/COUNTRIES OF DESTINATION	1998	1999	2000	2001	2002	2003	2004	2005	Jan-2006*	
AUSTRALIA	0	0	5	0	28	0	0	0	0	0
BERMUDA	0	0	0	0	5	0	0	0	0	0
BAHAMAS, THE	0	0	0	0	30	0	0	0	0	0
BANGLADESH	0	0	0	0	0	0	0	126	0	0
BELIZE	0	0	0	0	0	0	0	169	0	0
BRAZIL	6	0	0	0	0	0	0	0	0	0
CANADA	12938	18305	21728	21260	30332	30898	82674	105240	9337	
CHINA, PEOPLES REPUB	0	0	0	0	0	60	54	0	0	0
CHILE	0	0	0	33	0	3652	0	3607	0	0
COLOMBIA	0	0	40442	48495	37702	10140	3849	2565	0	0
COSTA RICA	0	0	0	0	26323	1779	6600	0	0	0
CUBA	0	0	0	0	0	0	0	10043	0	0
DENMARK	134226	144317	127901	162543	106103	72265	0	117	0	0
DOMINICAN REPUBLIC	0	0	0	0	0	0	0	148	0	0
IRELAND	178715	254127	219356	267265	297722	255398	185007	200438	32529	
EL SALVADOR	0	0	0	0	192	380	129	0	0	0
FINLAND	0	0	0	0	0	380	2072	3747	0	0
FRANCE	31814	20336	27427	2679	3000	0	0	431	431	
GERMANY	0	0	47708	16168	28333	580	5144	26213	0	0
GUATEMALA	0	0	3065	10070	3849	13131	3998	0	0	0
HONG KONG	0	0	88	0	0	0	0	0	0	0
HONDURAS	0	0	912	0	0	1391	8024	5039	933	
INDONESIA	0	0	0	0	0	0	11516	46072	4470	
INDIA	1047	0	0	0	0	0	0	0	0	0
ISRAEL	0	0	2786	0	0	12380	6366	47935	0	0
ITALY	23049	8085	12746	0	22032	0	0	0	0	0
JAPAN	5280	608	1466	26	40	15	0	2501	1410	
JAMAICA	0	0	4914	0	0	0	1490	774	0	0
KOREA, REPUBLIC OF	0	0	0	14	0	70	625	4843	752	
MEXICO	12168	22255	35718	31319	30751	45721	66894	128271	15759	
MALAYSIA	0	0	0	0	0	0	12682	34015	1966	
MOROCCO	0	0	0	0	0	0	0	5499	0	0
MOZAMBIQUE	0	0	0	0	87	0	0	0	0	0
NETHERLANDS	7710	22697	16816	19439	14793	16445	36536	53749	0	0
NICARAGUA	0	0	0	0	0	0	863	0	0	0
PANAMA	43	0	0	0	1247	0	1184	0	0	0
PORTUGAL	99865	69614	97039	67666	74209	52221	73396	57445	0	0
QATAR	0	0	37	0	0	0	0	0	0	0
PHILIPPINES	0	0	0	0	51	0	958	11758	3058	
SOUTH AFRICA, REPUB	0	0	0	0	0	0	546	1137	0	0
SINGAPORE	0	0	0	0	0	0	163	0	0	0
SPAIN	59666	63040	69199	39324	74677	40169	77176	110052	0	0
UNITED ARAB EMIRATES	0	0	0	0	0	82	0	0	0	0
THAILAND	0	62	0	0	0	61	10	12802	3669	
TAIWAN	0	57	80	0	0	0	7431	42225	8586	
TUNISIA	0	0	0	0	0	0	0	46	0	0
TURKEY	0	0	0	0	0	0	0	216	0	0
UNITED KINGDOM	100091	91272	69235	111165	86612	184742	188857	113874	130	
VENEZUELA	0	0	9240	0	4023	0	1726	10579	0	0
VIETNAM	0	0	0	0	0	0	633	19869	0	0
TOTAL	666618	714775	807908	797466	842141	741960	786603	1061545	83030	
SOURCE:	Department of Commerce, U.S. Census Bureau, Foreign Trade Statistics									
	^ - Data for month of January 2006 (4/11/06)									

Average Monthly Freight Rates U.S. Gulf to Holland

January 1991 – December 2005



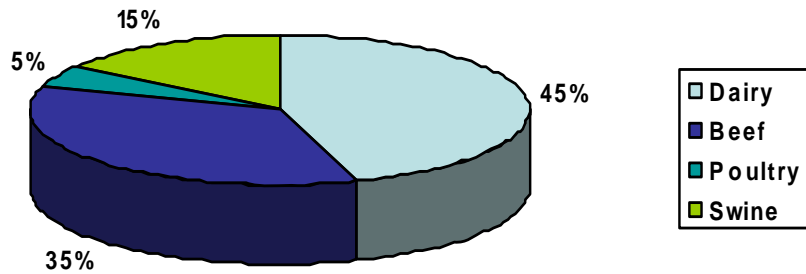
Basis: 55,000 mt vessels
55 cu. ft. per long ton stowage (HSS)
Dollars per mt

Credit to Don Morrison,
The Rice Company-Krohn Div.

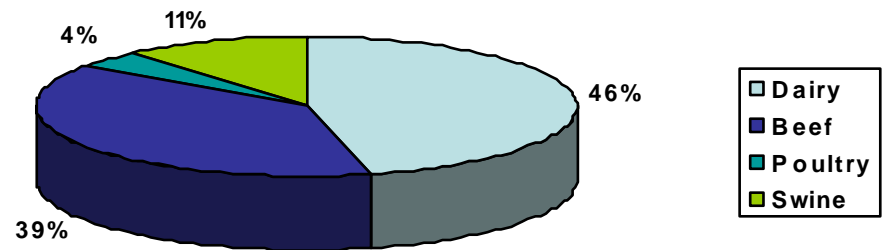


U.S. DDGS Consumption

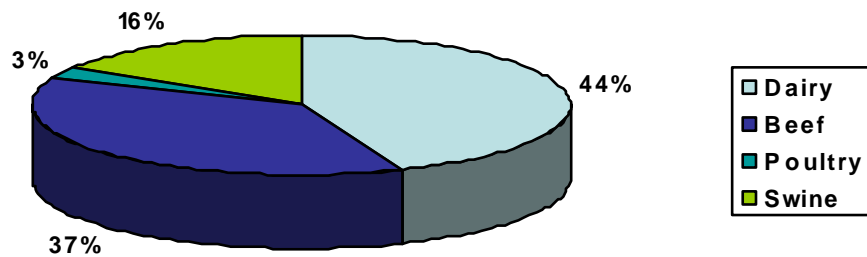
Estimate 2002



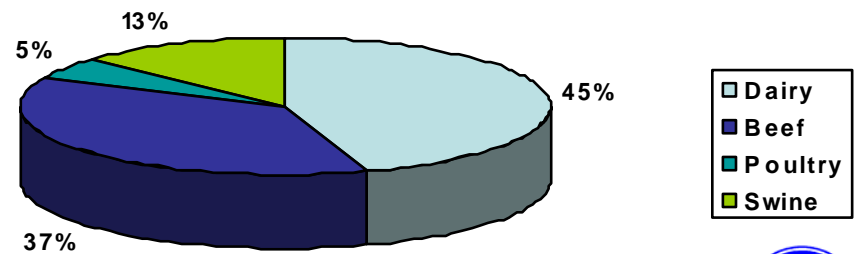
Estimate 2003



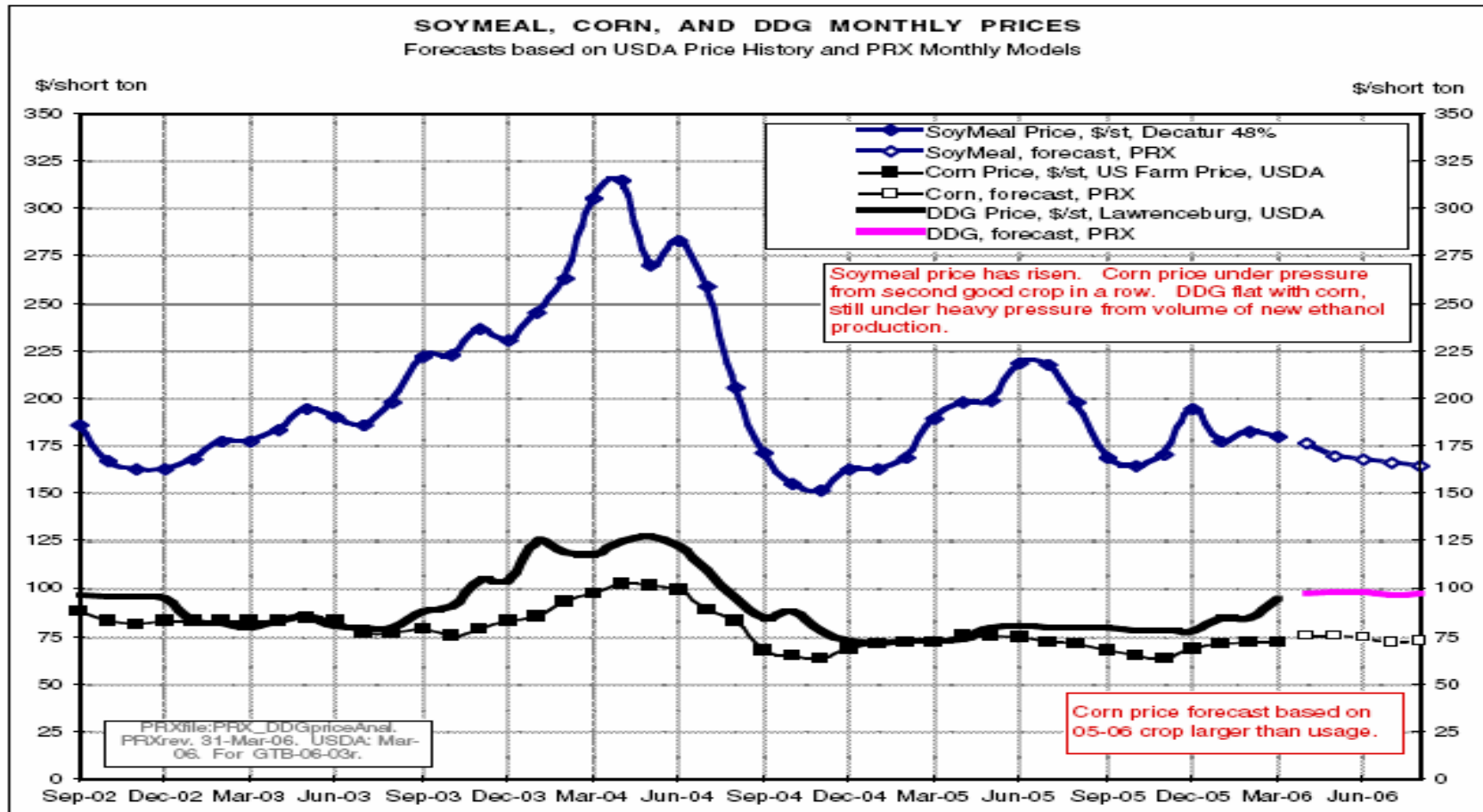
Estimate 2004



Estimate 2005



Soymeal, Corn, and DDG Monthly Prices



DDG Price Spreads vs. Lawrenceburg: IL, +0 to +5; MN, -5 to -7; NE, +10 to +15. USDA Grain Market News.

Data provided by The ProExporter Network



www.ddgs.umn.edu



CSC 2006