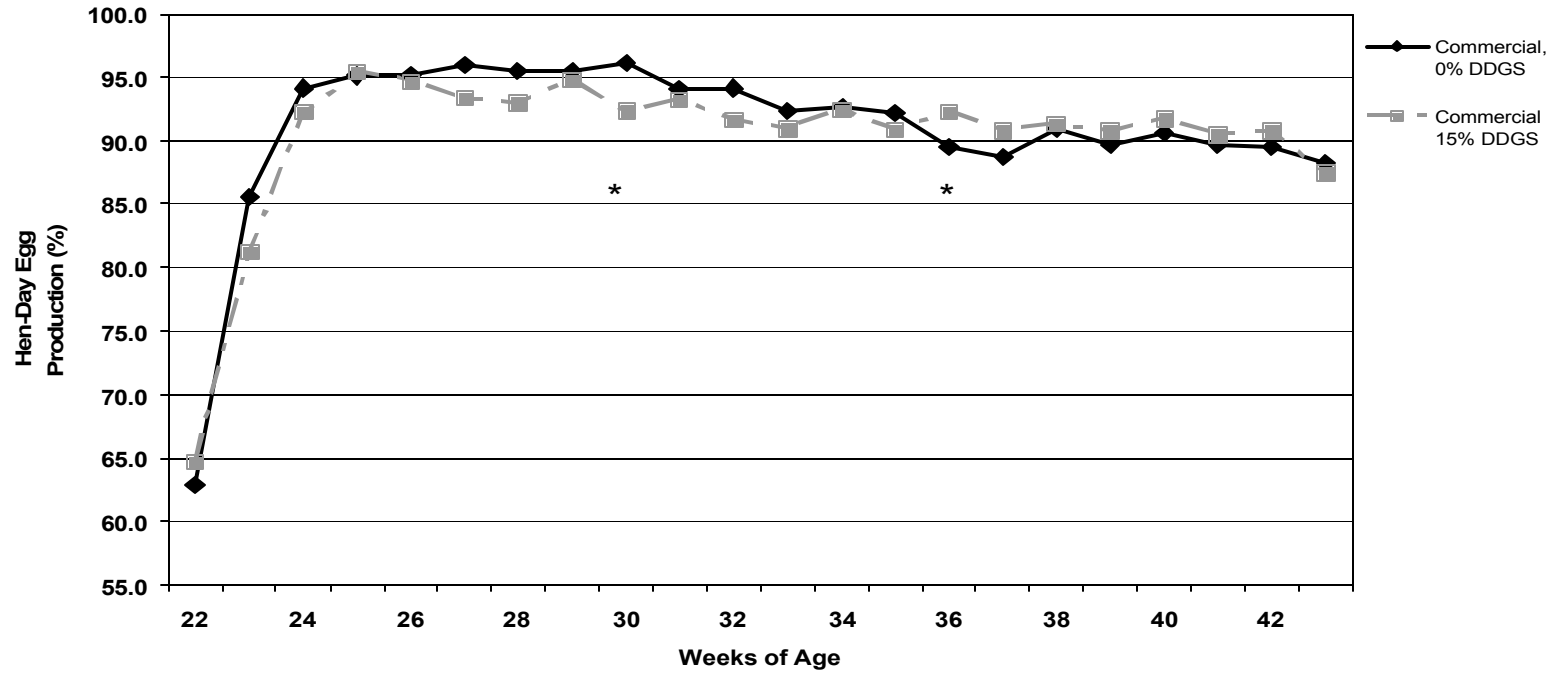


FIGURE 1. Effects of feeding DDGS^A to laying hens in commercial grade diets on hen-day egg production^B

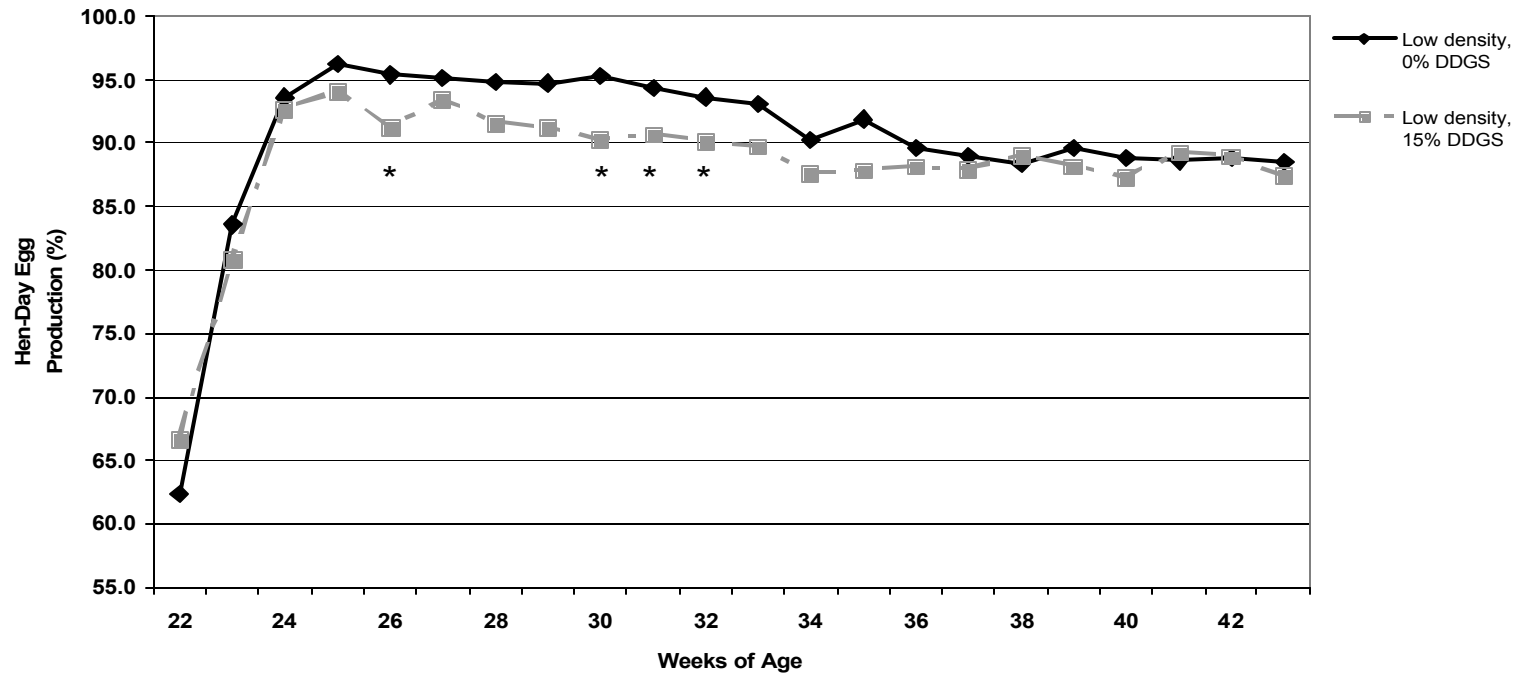


^ADDGS= Distiller's dried grains plus solubles.

^B Means represent 8 replications per treatment (16 hens/replication).

*Asterick denotes a significant ($P < 0.05$) difference between the two treatments.

FIGURE 2. Effects of feeding DDGS^A to laying hens in low density diets on hen-day egg production^B

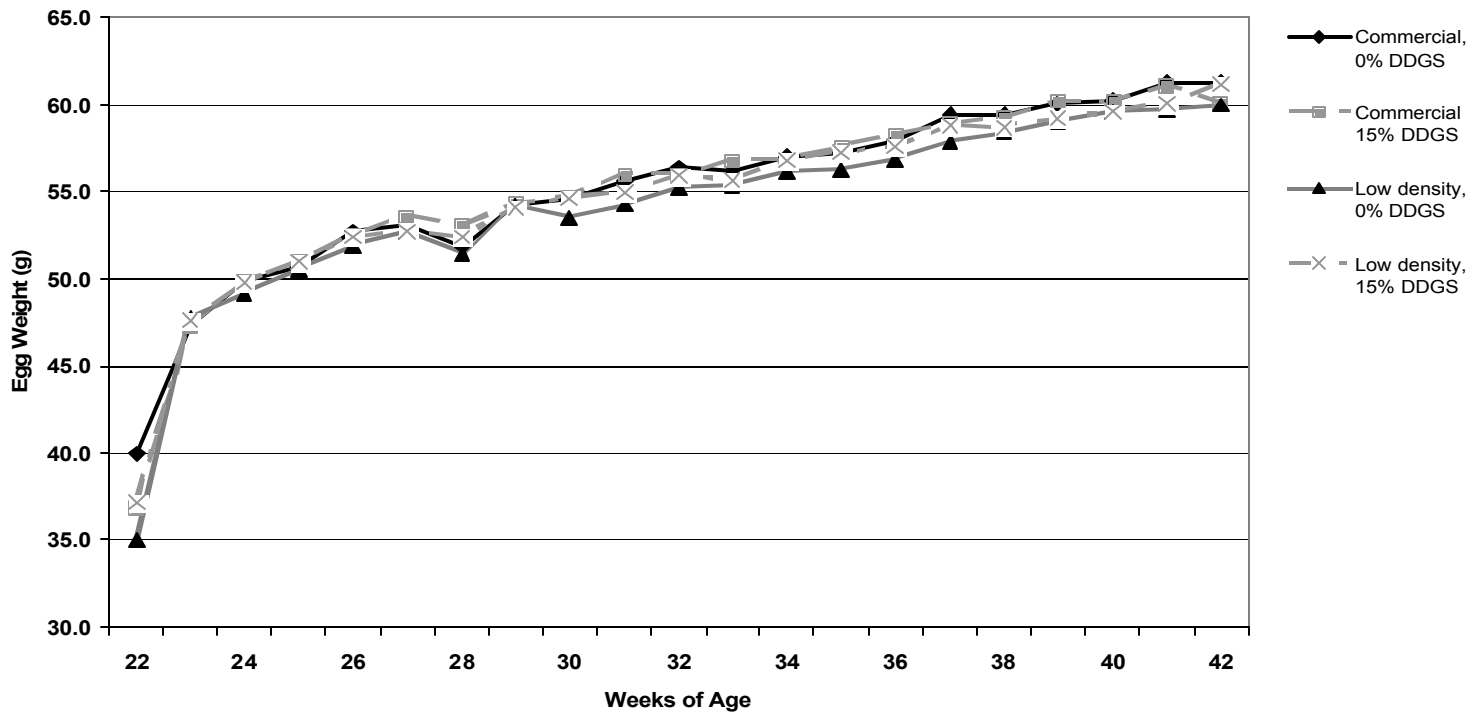


^A DDGS= Distiller's dried grains plus solubles.

^B Means represent 8 replications per treatment (16 hens/replication).

*Asterick denotes a significant (P < 0.05) difference between the two treatments.

FIGURE 3. Effect of feeding DDGS^A to laying hens on egg weight^B



^A DDGS= Distiller's dried grains plus solubles.

^B Means represent 8 replications per treatment (16 hens/replication).