



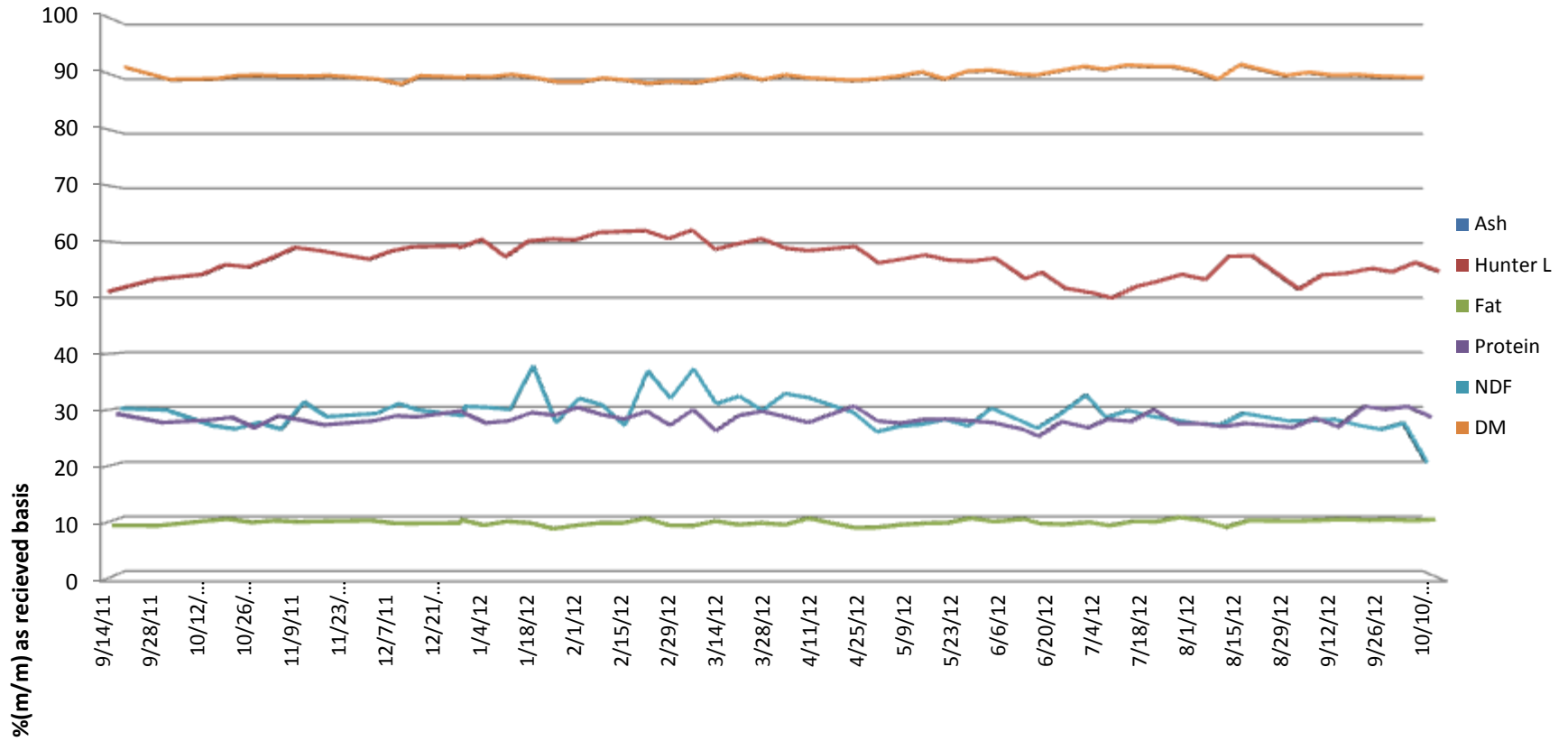
SGS Brookings  
241 34th Ave  
Brookings, SD 57006

# GLACIAL LAKES ENERGY LLC

Mina, SD



5500 Cenex Drive  
Inver Grove  
Heights, MN 55077  
PH. 800-769-1066

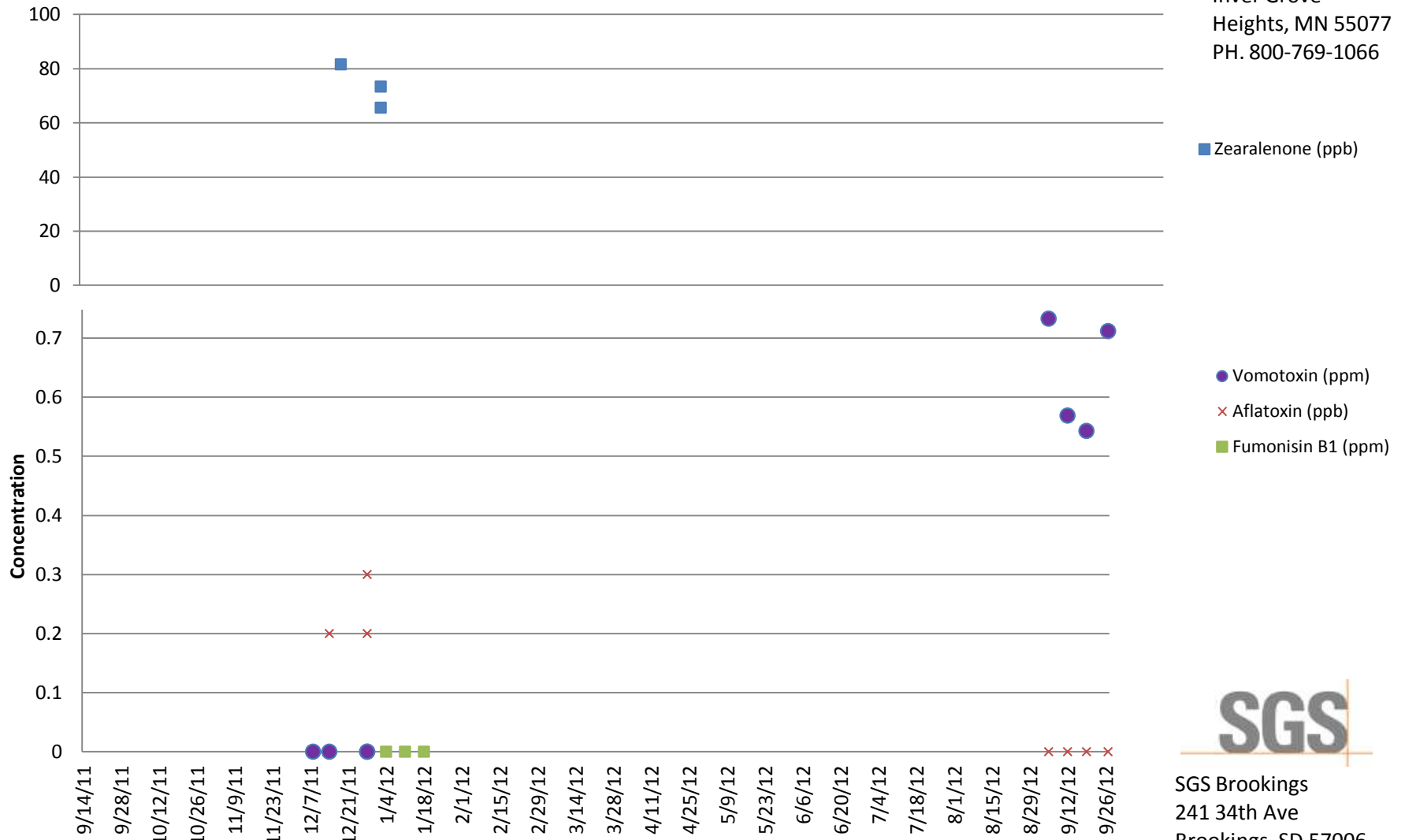


# GLACIAL LAKES ENERGY LLC

Mina, SD



Inver Grove Heights, MN 55077  
PH. 800-769-1066



SGS Brookings  
241 34th Ave  
Brookings, SD 57006

Customer: GLACIAL LAKES ENERGY LLC

Address: 13435 370TH AVE  
MINA, SD  
UNITED STATES

Analyte			Lysine	Crude ash as received	Hunter L Value	Phosphorus	Crude fat as is	NDF as received	Moisture	Drymatter	Aflatoxin	DON (Vomitoxin)	DON (Vomitoxin)	Fumonisin B1	Fumonisin B2	T2 toxin	Zearalenone	Crude protein as received
Scheme			Amino Acid Profile	Ash Content: Feed	Hunter Color	Minerals: As Received (No Drymatter)	Fat content in Animal Feed	NDF	Moisture Content	Moisture Content	Aflatoxin by ELISA	Vomitoxin (DON) by ELISA	Mycotoxin content by LC/MS/MS	Mycotoxin content by LC/MS/MS	Mycotoxin content by LC/MS/MS	Mycotoxin content by LC/MS/MS	Mycotoxin content by LC/MS/MS	Protein Content
Detection Limit						0.0063					5	0.5	0.24	0.08	0.08	40	8	
Unit	Received	Order	%			%(m/m)	%(m/m)	%	%(m/m)	%(m/m)	PPB	PPM	PPM	PPM	PPM	PPB	PPB	%(m/m)
GLE MINA, SD	9/14/2011 11:00	MW11-03354			51.12	0.54	9.2	29.94	7.93	92.07								29.07
9/27/11 GLE MINA	9/28/2011 10:52	MW11-03643			53.29	0.59	9.18	29.65	10.19	89.81								27.51
10-11-11	10/12/2011 10:41	MW11-03963			54.13	0.67	10.03	26.79	10.06	89.94								27.96
10/18/11	10/19/2011 10:34	MW11-04120			55.87	0.7	10.37	26.21	9.47	90.53								28.43
10/25/11	10/26/2011 10:23	MW11-04247			55.48	0.76	9.76	27.35	9.41	90.59								26.55
11/1/11	11/2/2011 11:04	MW11-04417			57.07	0.8	10.08	26.16	9.55	90.45								28.7
11/8/11	11/9/2011 10:35	MW11-04585			58.93	0.82	9.86	31.08	9.61	90.39								27.95
DDGS 11/15/11	11/16/2011 10:47	MW11-04754			58.41	0.69	9.95	28.42	9.47	90.53								27.08
11/29/11	12/1/2011 8:50	MW11-05042			56.86	1.93	10.11	29.02	10.15	89.85								27.81
COMPOSITE DDG	12/8/2011 10:26	MW11-05250			58.33	0.78	9.6	30.78	11.05	88.95		<0.5						28.72
12/13/11 DDGS COMP	12/14/2011 10:19	MW11-05381		3.48	59.05	0.82	9.58	29.64	9.51	90.49	0.2	<0.24		<0.08		<40	81.6	28.51
12/20/11	12/28/2011 9:57	MW11-05618			59.27	0.68	9.65	28.6	9.86	90.14	0.2	<0.24		0.13		<40	65.6	29.63
12/27/11	12/28/2011 10:47	MW11-05647			58.83	0.8	10.26	30.29	9.57	90.43	0.3	<0.24		<0.08		<40	73.4	29.38
1/3/12	1/4/2012 11:50	MW12-00067			60.39	0.81	9.24	30.12	9.75	90.25					<0.08			27.43





**Customer:** GLACIAL LAKES ENERGY LLC

**Address:** 13435 370TH AVE  
MINA, SD  
UNITED STATES

Analyte			Lysine	Crude ash as received	Hunter L Value	Phosphorus	Crude fat as is	NDF as received	Moisture	Drymatter	Aflatoxin	DON (Vomitoxin)	DON (Vomitoxin)	Fumonisin B1	Fumonisin B2	T2 toxin	Zearalenone	Crude protein as received
Scheme			Amino Acid Profile	Ash Content: Feed	Hunter Color	Minerals: As Received (No Drymatter)	Fat content in Animal Feed	NDF	Moisture Content	Moisture Content	Aflatoxin by ELISA	Vomitoxin (DON) by ELISA	Mycotoxin content by LC/MS/MS	Mycotoxin content by LC/MS/MS	Mycotoxin content by LC/MS/MS	Mycotoxin content by LC/MS/MS	Mycotoxin content by LC/MS/MS	Protein Content
Detection Limit						0.0063					5	0.5	0.24	0.08	0.08	40	8	
Unit	Received	Order	%			%(m/m)	%(m/m)	%	%(m/m)	%(m/m)	PPB	PPM	PPM	PPM	PPM	PPB	PPB	%(m/m)
DDGS 7/31/12	8/1/2012 12:37	MW12-05348			54.15	0.86	10.67	27.86	7.8	92.2								27.36
8/7/12 DDGS	8/8/2012 10:50	MW12-05520			53.25	0.79	10.09	27.19	8.62	91.38								27.3
8/14/12 DDGS	8/15/2012 10:30	MW12-05683			57.36	0.7	8.91	26.95	10.13	89.87								26.79
8/21/12	8/22/2012 10:55	MW12-05880			57.48	0.75	10.11	29.05	7.46	92.54								27.35
9/4/12 DDGS	9/5/2012 12:43	MW12-06185			51.52	0.71	10	27.64	9.46	90.54	<5	0.733						26.6
9/11/12	9/12/2012 11:23	MW12-06347			54.06	0.79	10.15	27.76	8.87	91.13	<5	0.569						28.29
9/18/12 DDGS	9/19/2012 10:54	MW12-06561			54.34	0.85	10.32	27.93	9.4	90.6	<5	0.543						26.75
9/26/12	9/27/2012 11:18	MW12-06788			55.22	0.65	10.15	26.78	9.32	90.68	<5	0.712						30.43
10/2/12	10/3/2012 11:31	MW12-06931	1.13		54.61	0.73	10.26	26.12	9.57	90.43	<5	0.701						29.88
10/9/12	10/10/2012 11:33	MW12-07096			56.27	0.61	10.08	27.28	9.74	90.26	<5	0.614						30.4
10/16/12	10/17/2012 11:36	MW12-07271			54.7	0.67	10.28	20.15	9.83	90.17	<5	0.509						28.54