



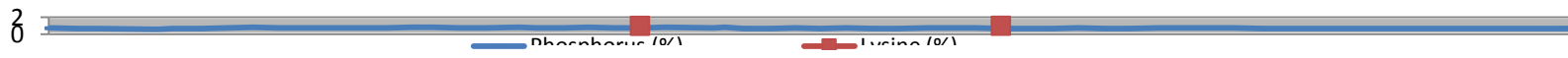
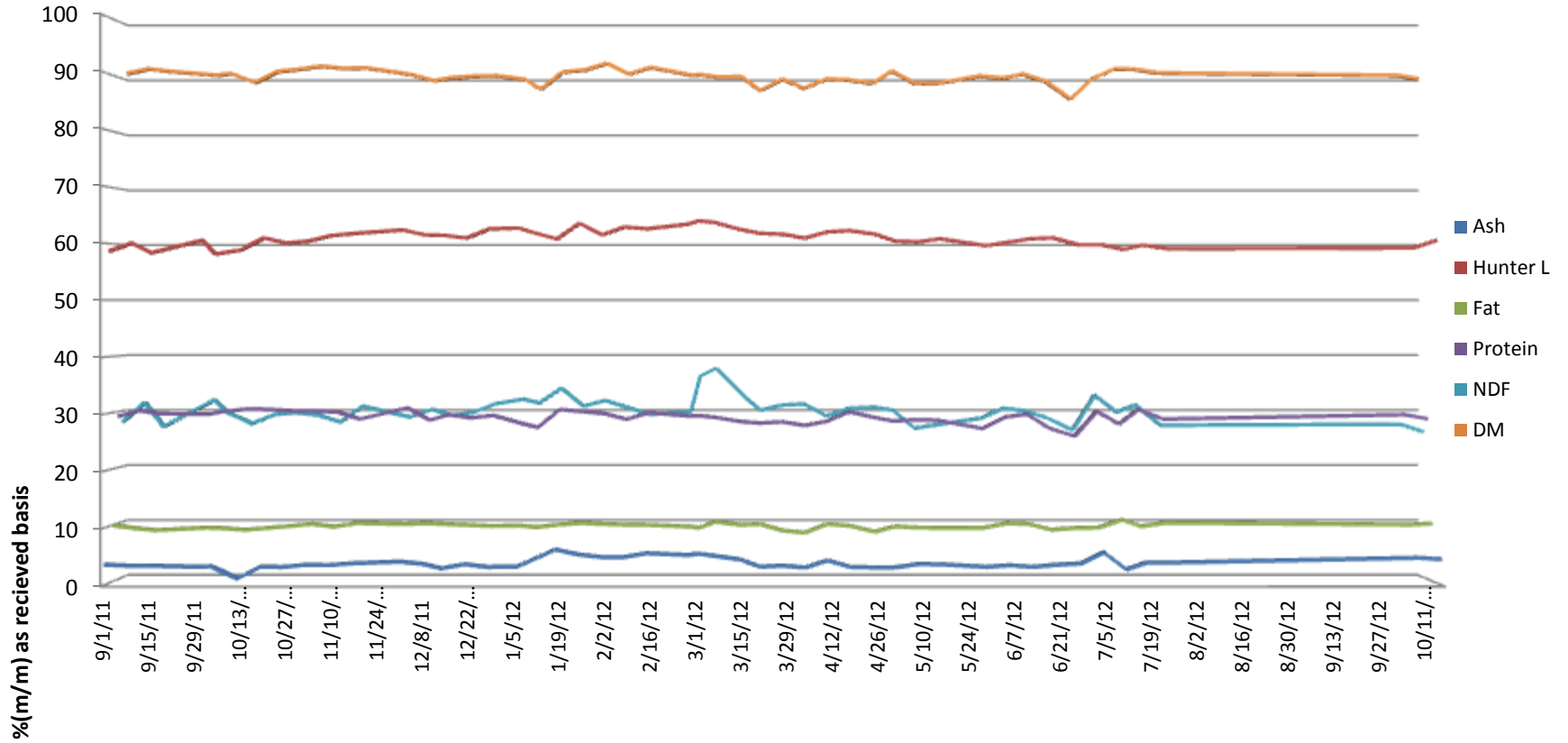
SGS Brookings
 241 34th Ave
 Brookings, SD 57006

GLACIAL LAKES ENERGY LLC

Watertown, SD



5500 Cenex Drive
 Inver Grove
 Heights, MN 55077
 PH. 800-769-1066

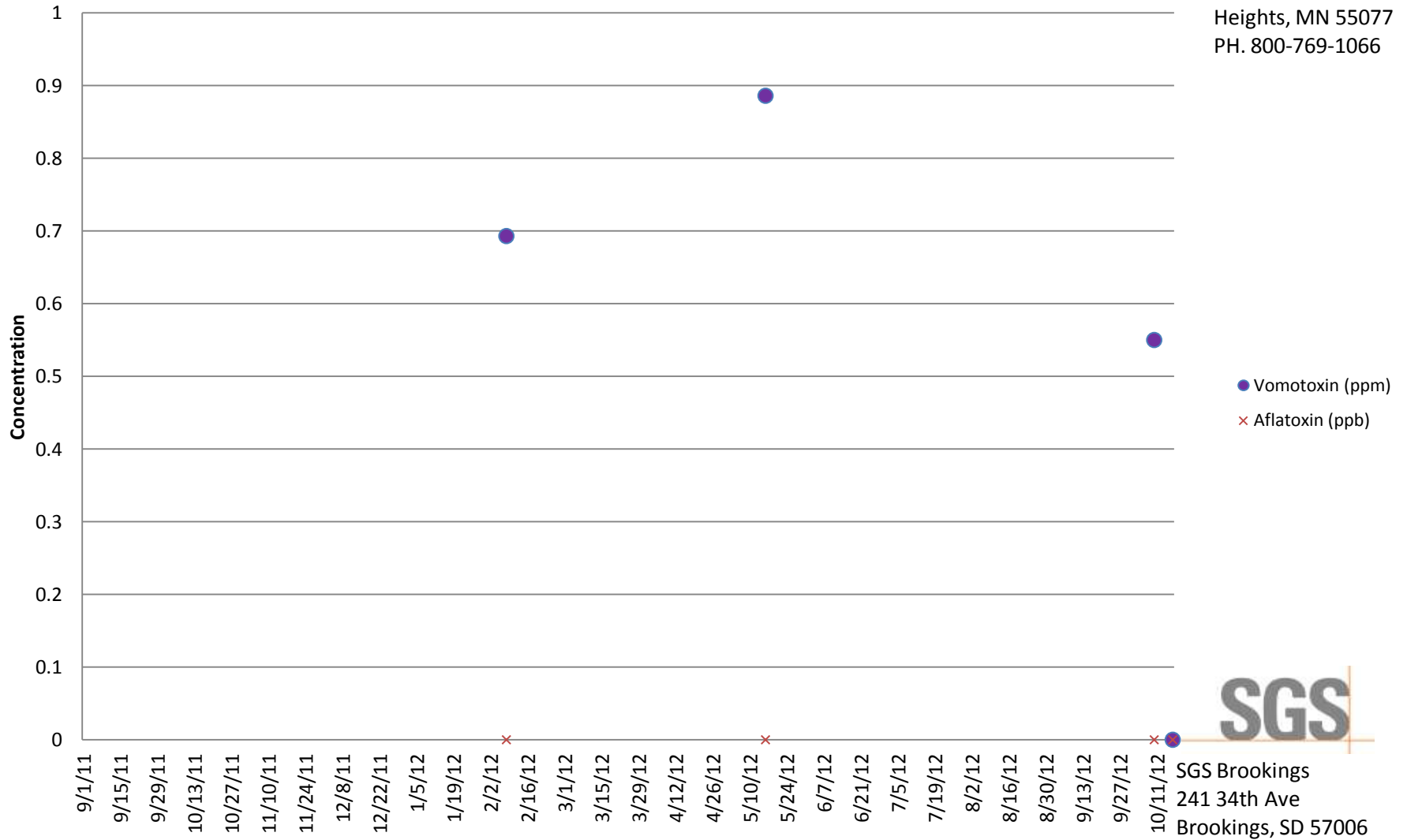


GLACIAL LAKES ENERGY LLC

Watertown, SD



Inver Grove Heights, MN 55077
PH. 800-769-1066



SGS Brookings
241 34th Ave
Brookings, SD 57006

Customer: GLACIAL LAKES ENERGY LLC

Address: 301 20TH AVE
WATERTOWN, SD
UNITED STATES

Analyte			Lysine	Crude ash as received	Hunter L Value	Phosphorus	Crude fat as is	NDF as received	Moisture	Drymatter	Aflatoxin	DON (Vomitoxin)	Crude protein as received
Scheme			Amino Acid Profile	Ash Content: Feed	Hunter Color	Minerals: As Received (No Drymatter)	Fat content in Animal Feed	NDF	Moisture Content	Moisture Content	Aflatoxin by ELISA	Vomitoxin (DON) by ELISA	Protein Content
Detection Limit						0.0063					5	0.5	
Unit	Received	Order	%	%(m/m)		%(m/m)	%(m/m)	%	%(m/m)	%(m/m)	PPB	PPM	%(m/m)
10/9/12 DDGS	10/10/2012 10:21	MW12-07069		4.858	59.21	0.64	10.1	27.64	9.2	90.8	<5	0.55	29.51
10/16/12 DDGS	10/17/2012 11:22	MW12-07268		4.603	60.55	0.68	10.3	26.33	9.84	90.16	<5	<0.5	28.78
8/30/11 ddgs	9/1/2011 10:24	MW11-03090		3.669	58.63	0.69	9.97	28.1	8.9	91.1			29.24
9/6/11 DDGS	9/8/2011 11:52	MW11-03221		3.476	60.08	0.67	9.46	31.58	8.04	91.96			30.25
9/13/11 DDGS	9/14/2011 10:06	MW11-03335		3.488	58.35	0.64	9.13	27.25	8.46	91.54			29.67
10/11/11 DDGS	10/12/2011 9:34	MW11-03946		1.197	58.86	0.62	9.19	27.76	10.52	89.48			30.54
10/3/11 DDGS	10/4/2011 9:18	MW11-03751		3.363	58.13	0.64	9.52	29.85	8.88	91.12			30.08
10/18/11 DDGS	10/19/2011 10:09	MW11-04108		3.318	60.99	0.69	9.51	29.4	8.54	91.46			30.42
9/29/11 DDGS	9/30/2011 10:39	MW11-03709		3.275	60.57	0.61	9.56	32.02	9.21	90.79			29.62
10/25/11 DDGS	10/26/2011 9:48	MW11-04236		3.249	60.07	0.77	9.85	29.71	8.11	91.89			30.21
11/1/11 DDGS	11/2/2011 10:29	MW11-04403		3.631	60.43	0.75	10.24	29.29	7.55	92.45			30.15
DDGS 11/8/11	11/9/2011 9:44	MW11-04569		3.559	61.39	0.73	9.73	28.03	7.95	92.05			29.98
11/15/11 DDGS	11/16/2011 9:39	MW11-04730		3.876	61.76	0.75	10.38	30.89	7.85	92.15			28.73
11/29/11 DDGS	12/1/2011 8:37	MW11-05038		4.19	62.4	0.72	10.21	28.94	9.09	90.91			30.72
12/6/11 DDGS	12/8/2011 10:03	MW11-05241		3.791	61.52	0.78	10.35	30.31	10.21	89.79			28.55
12/13/11 DDGS	12/14/2011 9:58	MW11-05376		2.999	61.43	0.79	10.2	29.28	9.6	90.4			29.5
12/20/11 DDGS	12/21/2011 11:20	MW11-05547		3.74	60.97	0.73	10.04	29.73	9.36	90.64			28.94
12/27/11 DDGS	12/28/2011 10:39	MW11-05640		3.261	62.57	0.71	9.87	31.32	9.29	90.71			29.37
1/3/12 DDGS	1/6/2012 10:02	MW12-00125		3.272	62.73	0.81	9.96	32.14	9.96	90.04			27.94
1/10/12 DDGS	1/11/2012 11:17	MW12-00230		4.533	61.89	0.76	9.65	31.48	11.74	88.26			27.23
1/17/12 DDGS	1/18/2012 10:22	MW12-00394		6.299	60.79	0.74	10.11	34.14	8.59	91.41			30.44

Customer: GLACIAL LAKES ENERGY LLC

Address: 301 20TH AVE
WATERTOWN, SD
UNITED STATES

Analyte			Lysine	Crude ash as received	Hunter L Value	Phosphorus	Crude fat as is	NDF as received	Moisture	Drymatter	Aflatoxin	DON (Vomitoxin)	Crude protein as received
Scheme			Amino Acid Profile	Ash Content: Feed	Hunter Color	Minerals: As Received (No Drymatter)	Fat content in Animal Feed	NDF	Moisture Content	Moisture Content	Aflatoxin by ELISA	Vomitoxin (DON) by ELISA	Protein Content
Detection Limit						0.0063					5	0.5	
Unit	Received	Order	%	%(m/m)		%(m/m)	%(m/m)	%	%(m/m)	%(m/m)	PPB	PPM	%(m/m)
1/24/12 DDGS	1/25/2012 9:25	MW12-00530		5.444	63.59	0.77	10.39	30.91	8.26	91.74			30.08
1/31/12 DDGS	2/1/2012 10:27	MW12-00694		4.998	61.52	0.71	10.21	31.93	7.05	92.95			29.71
2/7/12 DDGS	2/8/2012 10:08	MW12-00879	0.98	4.985	62.92	0.73	10.1	30.65	9.02	90.98	<5	0.693	28.69
2/14/12 DDGS	2/15/2012 10:42	MW12-01036		5.651	62.59	0.81	10.06	29.4	7.76	92.24			29.86
2/24/12 ddgs	2/28/2012 10:38	MW12-01275		5.341	63.44	0.75	9.76	29.85	9.17	90.83			29.25
2/18/12 DDGS	3/2/2012 10:48	MW12-01382		5.581	64	0.8	9.55	36.3	9.1	90.9			29.32
3/6/12 DDGS	3/7/2012 10:15	MW12-01466		5.201	63.71	0.68	10.62	37.73	9.47	90.53			29.01
3/14/12 DDGS	3/15/2012 10:45	MW12-01665		4.558	62.45	0.68	10.06	33.19	9.46	90.54			28.27
3/20/12 DDGS	3/21/2012 9:48	MW12-01796		3.286	61.8	0.7	10.21	30.14	11.97	88.03			28
3/27/12	3/28/2012 10:34	MW12-01975		3.479	61.64	0.64	9.07	31.1	9.9	90.1			28.23
4/3/12 DDGS	4/4/2012 11:13	MW12-02143		3.151	60.96	0.74	8.66	31.29	11.56	88.44			27.57
4/10/12 DDGS	4/11/2012 11:03	MW12-02304		4.398	62.06	0.68	10.23	29.11	9.9	90.1			28.33
4/17/12 DDGS	4/18/2012 10:37	MW12-02470		3.242	62.27	0.64	9.9	30.5	10.03	89.97			30.02
4/25/12 DDGS	4/26/2012 11:08	MW12-02684		3.154	61.61	0.71	8.84	30.7	10.68	89.32			29.01
5/1/12	5/2/2012 11:08	MW12-02826		3.188	60.42	0.71	9.78	30.2	8.39	91.61			28.37
5/15/12 DDGS	5/16/2012 11:06	MW12-03158	0.99	3.708	60.83	0.65	9.51	27.56	10.74	89.26	<5	0.886	28.5
5/8/12 DDGS	5/9/2012 10:24	MW12-02973		3.772	60.29	0.71	9.59	26.92	10.61	89.39			28.6
5/29/12 DDGS	5/30/2012 11:24	MW12-03483		3.255	59.61	0.63	9.55	28.72	9.31	90.69			27.04
6/5/12 DDGS	6/6/2012 11:54	MW12-03695		3.554	60.23	0.73	10.33	30.52	9.7	90.3			29.07
6/12/12 DDGS	6/13/2012 10:46	MW12-03896		3.252	60.84	0.65	10.21	30.07	8.99	91.01			29.61
6/19/12 DDGS	6/20/2012 11:08	MW12-04097		3.622	60.99	0.67	9.21	28.76	10.29	89.71			27.09

Customer: GLACIAL LAKES ENERGY LLC

Address: 301 20TH AVE
WATERTOWN, SD
UNITED STATES

Analyte			Lysine	Crude ash as received	Hunter L Value	Phosphorus	Crude fat as is	NDF as received	Moisture	Drymatter	Aflatoxin	DON (Vomitoxin)	Crude protein as received
Scheme			Amino Acid Profile	Ash Content: Feed	Hunter Color	Minerals: As Received (No Drymatter)	Fat content in Animal Feed	NDF	Moisture Content	Moisture Content	Aflatoxin by ELISA	Vomitoxin (DON) by ELISA	Protein Content
Detection Limit						0.0063					5	0.5	
Unit	Received	Order	%	%(m/m)		%(m/m)	%(m/m)	%	%(m/m)	%(m/m)	PPB	PPM	%(m/m)
DDGS 6/27/12	6/28/2012 10:33	MW12-04383		3.869	59.76	0.71	9.52	26.59	13.5	86.5			25.67
7/3/12 DDGS	7/5/2012 10:20	MW12-04563		5.812	59.78	0.72	9.57	32.88	9.8	90.2			30.12
DDGS 7/10/12	7/12/2012 11:38	MW12-04818		2.816	58.96	0.71	10.99	29.83	8.06	91.94			27.85
DDGS 7/17/12	7/18/2012 11:01	MW12-04978		3.998	59.72	0.73	9.82	31.11	8.08	91.92			30.41
7/25/12 DDGS	7/26/2012 11:07	MW12-05223		4.017	59.08	0.66	10.43	27.45	8.77	91.23			28.72
8/1/12 DDGS	8/2/2012 10:42	MW12-05382		4.145	59.37	0.84	9.98	26.84	7.94	92.06			28.51
8/7/12 DDGS	8/8/2012 10:45	MW12-05517		4.005	58.5	0.77	9.64	28.17	9.77	90.23			29.08
8/14/12 DDGS	8/15/2012 10:37	MW12-05687		3.754	57.85	0.74	9.96	26.9	9.56	90.44			27.98
8/23/12 DDGS	8/27/2012 10:15	MW12-05953		3.736	60.1	0.74	10.19	27.16	10.43	89.57			28.78
8/28/12 DDGS	8/29/2012 10:25	MW12-06020		3.492	60.08	0.71	10.45	27.28	10.43	89.57			30.29
9/4/12 DDGS	9/5/2012 12:38	MW12-06182		3.683	59.46	0.78	9.86	27.29	8.44	91.56	<5	0.611	29.42
9/10/12 DDGS	9/14/2012 10:38	MW12-06408		3.683	60.55	0.65	9.81	26.92	9.85	90.15	<5	0.505	28.45
9/25/12 DDGS	9/26/2012 12:37	MW12-06757		4.261	60.13	0.58	10.02	24.88	10.34	89.66	<5	<0.5	32.23
9/20/12 DDGS	9/21/2012 10:58	MW12-06624		3.644	60.3	0.65	8.88	25.63	9.83	90.17	<5	0.541	31
10/4/12 DDGS	10/5/2012 11:08	MW12-06982		4.278	58.43	0.68	9.96	28.63	10.12	89.88	<5	0.592	30.6