



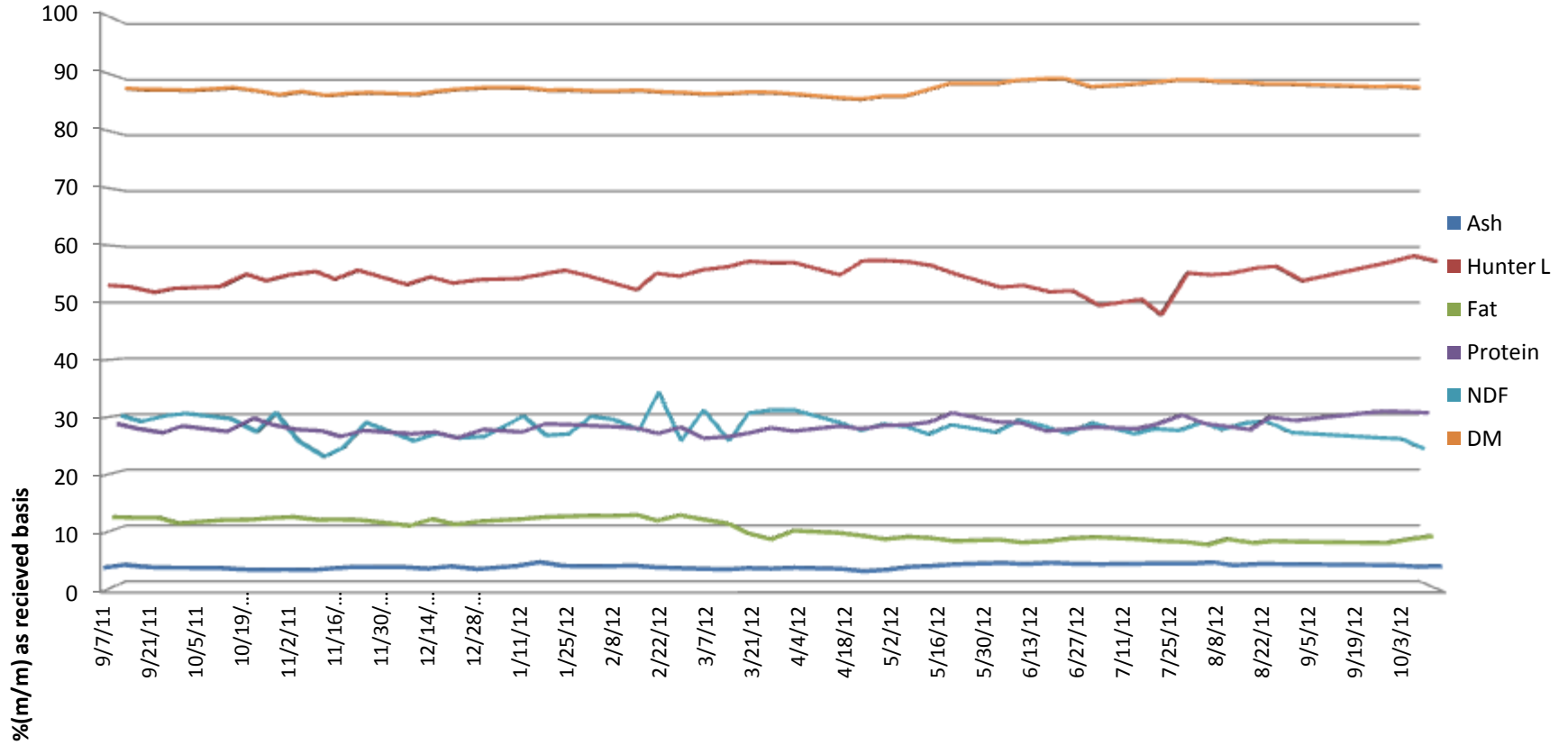
SGS Brookings
 241 34th Ave
 Brookings, SD 57006

Nugen

Marion, SD



5500 Cenex Drive
 Inver Grove
 Heights, MN 55077
 PH. 800-769-1066

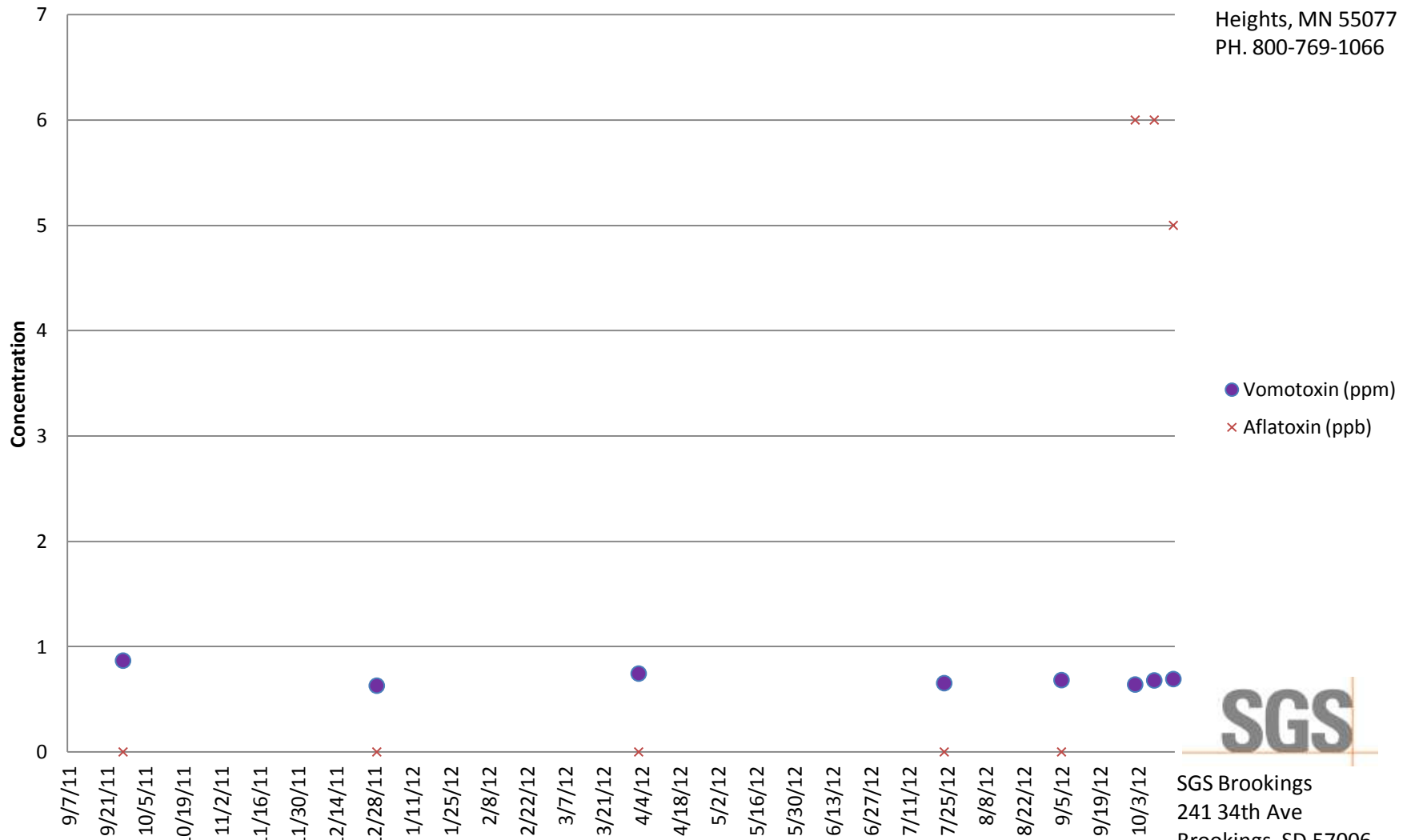


Nugen

Marion, SD



Inver Grove Heights, MN 55077
PH. 800-769-1066



SGS Brookings
241 34th Ave
Brookings, SD 57006

Customer: NuGen Energy

Address: 27283 447th AVENUE
MARION, SD
UNITED STATES

Analyte			Lysine	Crude ash as received	Hunter L Value	Phosphorus	Crude fat as is	NDF as received	Moisture	Drymatter	Aflatoxin	DON (Vomitoxin)	Crude protein as received
Scheme			Amino Acid Profile	Ash Content: Feed	Hunter Color	Minerals: As Received (No Drymatter)	Fat content in Animal Feed	NDF	Moisture Content	Moisture Content	Aflatoxin by ELISA	Vomitoxin (DON) by ELISA	Protein Content
Detection Limit						0.0063					5	0.5	
Unit	Received	Order	%	%(m/m)		%(m/m)	%(m/m)	%	%(m/m)	%(m/m)	PPB	PPM	%(m/m)
DDGS 10/5/12 WEEKLY	10/9/2012 11:27	MW12-07049		4.253	58.14	0.71	8.47	25.77	11.28	88.72	6	0.679	30.7
ddgs 9/28/12	10/2/2012 10:56	MW12-06895	0.97	4.497	57.09	0.74	7.81	25.96	11.37	88.63	6	0.64	30.81
DDGS 10/12/12 WEEKLY	10/16/2012 10:50	MW12-07226		4.373	57.18	0.71	9.03	24.01	11.54	88.46	5	0.692	30.52
DDGS 9-2-11 Weekly	9/7/2011 10:52	MW11-03201		4.089	53	0.87	12.35	29.89	11.66	88.34			28.56
DDGS 9-9-11 WEEKLY	9/13/2011 10:40	MW11-03320		4.571	52.79	0.78	12.25	28.85	11.89	88.11			27.75
ddgs 916/11 weekly	9/21/2011 10:56	MW11-03492		4.163	51.79	0.73	12.24	29.89	11.9	88.1			27.01
DDGS 9-23-11	9/27/2011 10:19	MW11-03613	0.82	4.077	52.47	0.66	11.27	30.28	12.03	87.97	0	0.867	28.2
DDGS 10-14-11 WEEKLY	10/19/2011 11:03	MW11-04129		3.77	54.96	0.69	11.9	27.03	12.18	87.82			29.58
DDG 10-21-11 WEEKLY	10/25/2011 11:03	MW11-04227		3.729	53.81	0.78	12.16	30.43	12.83	87.17			28.4
DDGS 9-30-11 WEEKLY	10/11/2011 10:27	MW11-03912		4.065	52.79	0.66	11.82	29.34	11.55	88.45			27.22
DDGS 10-28-11 WEEKLY	11/1/2011 10:33	MW11-04374		3.769	54.83	0.71	12.37	25.38	12.23	87.77			27.59
WEEKLY 11/4/11	11/9/2011 10:23	MW11-04584		3.682	55.43	0.76	11.86	22.63	12.95	87.05			27.34
DDGS 11/11/11 WEEKLY	11/15/2011 11:19	MW11-04716		3.962	54.09	0.76	11.93	24.21	12.61	87.39			26.34
DDGS 11-18-11 WEEKLY	11/22/2011 10:15	MW11-04870		4.223	55.64	0.79	11.83	28.68	12.43	87.57			27.4
DDGS 12-2-11 WEEKLY	12/7/2011 8:38	MW11-05199		4.167	53.15	0.9	10.83	25.4	12.73	87.27			26.81
DDGS 12-9-11 WEEKLY	12/14/2011 9:09	MW11-05363		3.906	54.48	0.85	12	26.74	12.16	87.84			27.11
DDGS 12/16/11 WEEKLY	12/21/2011 9:30	MW11-05517		4.329	53.4	0.91	11.04	25.91	11.78	88.22			26.08
DDGS 12-23-11 WEEKLY	12/29/2011 10:02	MW11-05666	0.94	3.836	54	0.81	11.62	26.2	11.54	88.46	0	0.629	27.58
DDGS 1/6/12 WEEKLY	1/10/2012 10:13	MW12-00191		4.377	54.19	0.98	11.97	29.83	11.56	88.44			27.13
DDGS 1/13/12 WEEKLY	1/17/2012 11:07	MW12-00361		5.047	54.91	0.96	12.33	26.39	11.99	88.01			28.53
DDGS 1/20/12 WEEKLY	1/24/2012 10:46	MW12-00516		4.401	55.64	0.87	12.46	26.63	11.95	88.05			28.48

Customer: NuGen Energy

Address: 27283 447th AVENUE
MARION, SD
UNITED STATES

Analyte			Lysine	Crude ash as received	Hunter L Value	Phosphorus	Crude fat as is	NDF as received	Moisture	Drymatter	Aflatoxin	DON (Vomitoxin)	Crude protein as received
Scheme			Amino Acid Profile	Ash Content: Feed	Hunter Color	Minerals: As Received (No Drymatter)	Fat content in Animal Feed	NDF	Moisture Content	Moisture Content	Aflatoxin by ELISA	Vomitoxin (DON) by ELISA	Protein Content
Detection Limit						0.0063					5	0.5	
Unit	Received	Order	%	%(m/m)		%(m/m)	%(m/m)	%	%(m/m)	%(m/m)	PPB	PPM	%(m/m)
DDGS 1/27/12 WEEKLY	1/31/2012 10:43	MW12-00680		4.327	54.68	0.9	12.58	29.74	12.14	87.86			28.24
DDGS 2/3/12 WEEKLY	2/7/2012 10:31	MW12-00858		4.373	53.53	0.93	12.57	29.22	12.16	87.84			28.09
DDGS 2/10/12 WEEKLY	2/15/2012 10:57	MW12-01044		4.414	52.23	0.89	12.7	27.34	11.99	88.01			27.76
ddgs 2.17.12	2/21/2012 11:01	MW12-01143		4.143	55.09	0.94	11.72	34.11	12.28	87.72			26.86
DDGS 2/24/12	2/28/2012 11:50	MW12-01299		4.023	54.6	0.83	12.69	25.4	12.42	87.58			27.97
DDGS 3/2/12 WEEKLY	3/6/2012 10:20	MW12-01435		3.878	55.69	0.86	11.94	30.91	12.66	87.34			26.02
ddgs 3/9/12 weekly	3/14/2012 10:40	MW12-01625		3.778	56.26	0.79	11.2	25.4	12.58	87.42			26.32
DDGS 3/16/12 WEEKLY	3/20/2012 10:44	MW12-01773		4.019	57.19	0.81	9.49	30.34	12.34	87.66			26.93
DDGS 3/23/12 WEEKLY	3/27/2012 10:49	MW12-01946		3.908	56.94	0.77	8.46	30.89	12.39	87.61			27.86
DDGS 3/30/12 WEEKLY	4/3/2012 10:09	MW12-02094	0.93	4.087	56.96	0.79	9.96	30.91	12.67	87.33	0	0.744	27.29
DDGS 4/13/12 WEEKLY	4/17/2012 10:03	MW12-02427		3.894	54.82	0.72	9.57	28.71	13.35	86.65			28.19
DDGS 4/27/12 WEEKLY	5/1/2012 10:37	MW12-02772		3.729	57.33	0.88	8.47	28.38	13.08	86.92			28.3
DDGS 4/20/12 WEEKLY	4/24/2012 10:03	MW12-02597		3.47	57.3	0.72	9.06	27.29	13.59	86.41			27.69
DDGS 5/4/12 WEEKLY	5/8/2012 10:51	MW12-02936		4.227	57.09	0.85	8.9	27.96	13.02	86.98			28.38
DDGS 5/11/12 WEEKLY	5/15/2012 10:24	MW12-03097		4.391	56.46	0.77	8.67	26.59	11.92	88.08			28.88
DDGS 5/18/12 WEEKLY	5/22/2012 10:14	MW12-03275		4.674	55.01	0.72	8.15	28.25	10.78	89.22			30.52
DDGS 6/1/12 WEEKLY	6/5/2012 10:27	MW12-03640		4.903	52.67	0.95	8.38	26.92	10.82	89.18			28.91
DDGS 6/8/12 WEEKLY	6/12/2012 11:04	MW12-03847		4.711	53	0.79	7.88	29.1	10.23	89.77			28.77
DDGS 6/15/12 WEEKLY	6/20/2012 11:00	MW12-04094		4.94	51.87	0.87	8.12	28.02	9.97	90.03			27.31
DDGS 6/22/12 WEEKLY	6/27/2012 10:52	MW12-04319		4.736	52.06	0.9	8.62	26.7	9.92	90.08			27.63
DDGS 6/29/12 WEEKLY	7/5/2012 10:50	MW12-04580		4.688	49.5	0.8	8.83	28.58	11.37	88.63			27.98

Customer: NuGen Energy

Address: 27283 447th AVENUE
MARION, SD
UNITED STATES

Analyte			Lysine	Crude ash as received	Hunter L Value	Phosphorus	Crude fat as is	NDF as received	Moisture	Drymatter	Aflatoxin	DON (Vomitoxin)	Crude protein as received
Scheme			Amino Acid Profile	Ash Content: Feed	Hunter Color	Minerals: As Received (No Drymatter)	Fat content in Animal Feed	NDF	Moisture Content	Moisture Content	Aflatoxin by ELISA	Vomitoxin (DON) by ELISA	Protein Content
Detection Limit						0.0063					5	0.5	
Unit	Received	Order	%	%(m/m)		%(m/m)	%(m/m)	%	%(m/m)	%(m/m)	PPB	PPM	%(m/m)
WEEKLY	7/18/2012 10:25	MW12-04962		4.781	50.54	0.91	8.46	26.65	10.92	89.08			27.73
DDGS 7/20/12 WEEKLY	7/24/2012 10:25	MW12-05135	0.92	4.815	47.85	0.89	8.16	27.55	10.61	89.39	0	0.653	28.48
DDGS 7/27/12 WEEKLY	8/1/2012 10:11	MW12-05332		4.785	55.16	0.93	7.99	27.27	10.18	89.82			30.13
DDGS 8/3/12 WEEKLY	8/8/2012 10:39	MW12-05513		5.013	54.85	0.88	7.49	28.7	10.15	89.85			28.62
DDGS 8/10/12 WEEKLY	8/14/2012 10:47	MW12-05658		4.489	55.06	0.83	8.48	27.44	10.44	89.56			28.18
DDGS 8/17/12 WEEKLY	8/22/2012 10:03	MW12-05861		4.731	56.04	0.88	7.81	28.61	10.55	89.45			27.54
DDGS 8/24/12 WEEKLY	8/28/2012 10:41	MW12-05992		4.697	56.32	0.9	8.14	28.89	10.85	89.15			29.74
DDGS 8/31/12 WEEKLY	9/5/2012 10:33	MW12-06142		4.656	53.79	0.87	8.01	26.88	10.89	89.11	<5	0.682	29.16
DDGS 9-7-12 WEEKLY	9/18/2012 10:55	MW12-06517		4.723	55.84	0.8	11.03	24.62	11.25	88.75	<5	0.556	28.53
DDGS 9-14-12 WEEKLY	9/18/2012 10:57	MW12-06518		4.535	54.78	0.78	7.58	25.93	12.01	87.99	<5	0.55	29.19
DDGS 9/21/12 WEEKLY	9/25/2012 12:11	MW12-06693		4.63	54.02	0.76	7.57	28.73	10.77	89.23	6	<0.5	29.2