



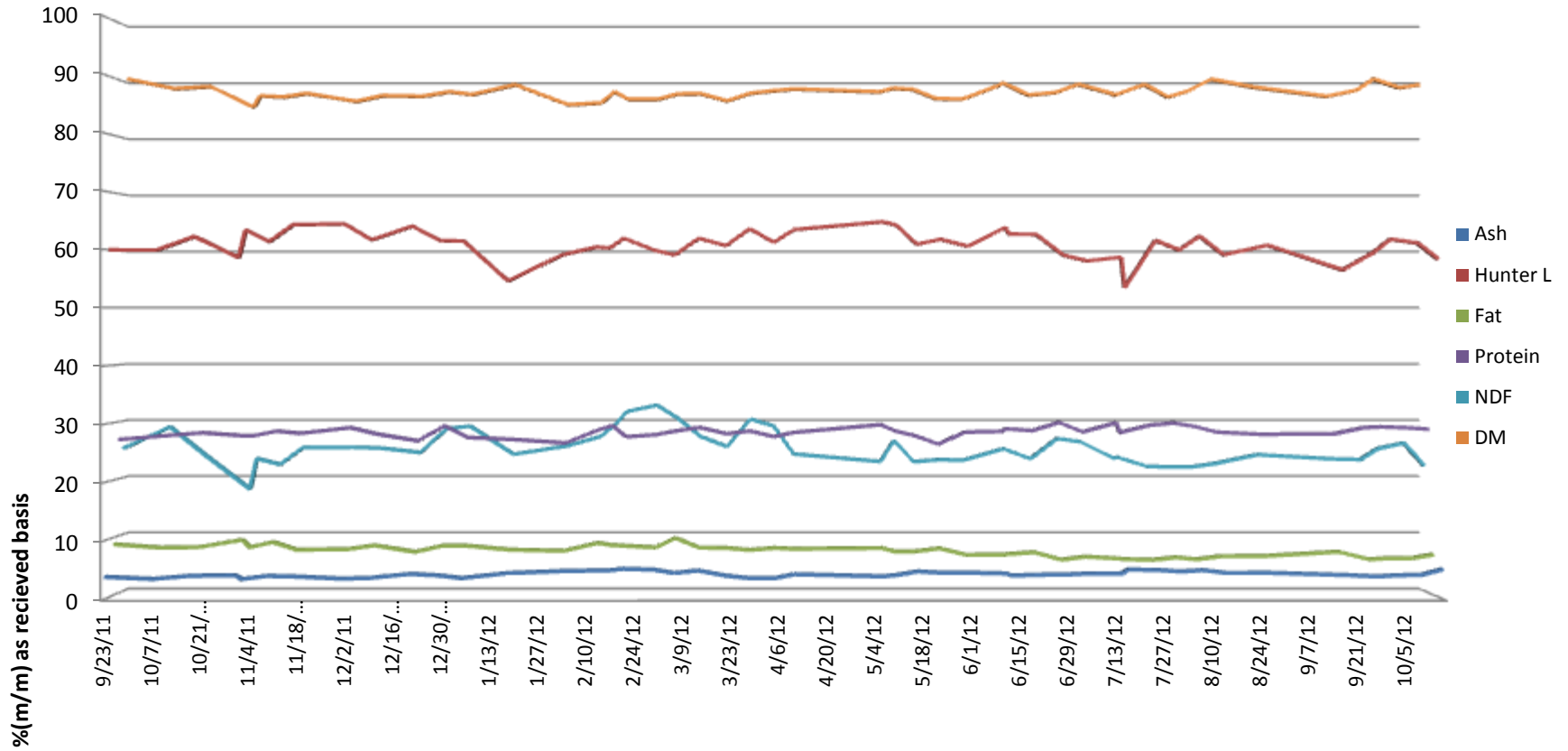
SGS Brookings
241 34th Ave
Brookings, SD 57006

SIouxLAND ETHANOL LLC

Jackson, NE



5500 Cenex Drive
Inver Grove
Heights, MN 55077
PH. 800-769-1066

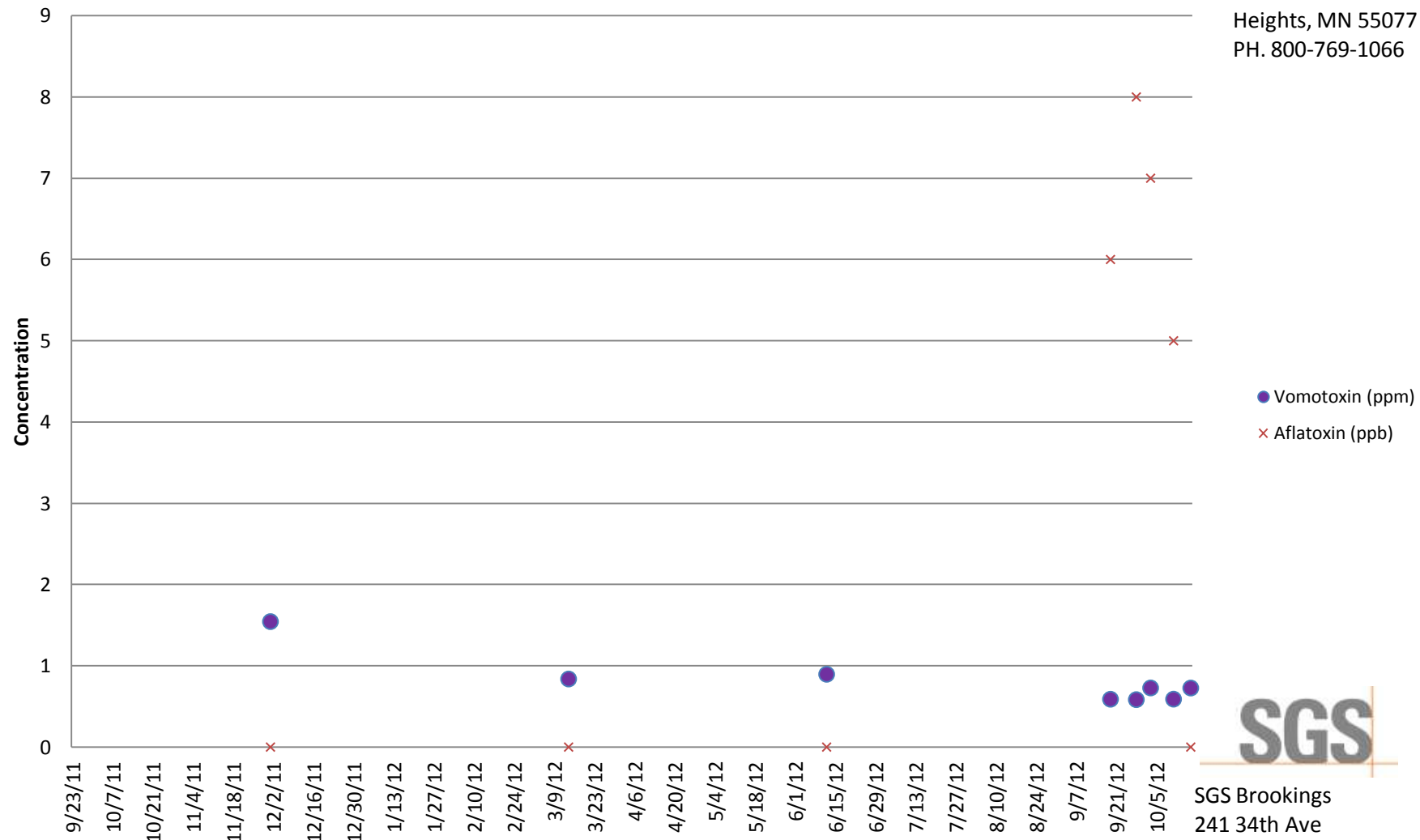


SIouxLAND ETHANOL LLC

Jackson, NE



Inver Grove Heights, MN 55077
PH. 800-769-1066



SGS Brookings
241 34th Ave
Brookings, SD 57006

Customer: SIOUXLAND ETHANOL LLC

Address: 1501 KNOX BLVD
JACKSON, NE
UNITED STATES

Analyte			Lysine	Crude ash as received	Hunter L Value	Phosphorus	Crude fat as is	NDF as received	Moisture	Drymatter	Aflatoxin	DON (Vomitoxin)	Crude protein as received
Scheme			Amino Acid Profile	Ash Content: Feed	Hunter Color	Minerals: As Received (No Drymatter)	Fat content in Animal Feed	NDF	Moisture Content	Moisture Content	Aflatoxin by ELISA	Vomitoxin (DON) by ELISA	Protein Content
Detection Limit						0.0063					5	0.5	
Unit	Received	Order	%	%(m/m)		%(m/m)	%(m/m)	%	%(m/m)	%(m/m)	PPB	PPM	%(m/m)
DDG 9-20-2011	9/23/2011 11:25	MW11-03560		3.885	59.97	0.87	8.87	25.2	9.41	90.59			26.92
DDG 10/6/11	10/7/2011 10:10	MW11-03855		3.532	59.95	0.77	8.3	28.99	11.12	88.88			27.6
DDG 10-17-11	10/18/2011 10:54	MW11-04089		4.069	62.28	0.87	8.39	23.83	10.76	89.24			28.11
ddg 10-25-11	10/31/2011 10:36	MW11-04360		4.174	58.65	0.92	9.67	18.03	14.42	85.58			27.55
DDG 11-1-11	11/2/2011 10:50	MW11-04412		3.504	63.39	0.79	8.35	23.42	12.39	87.61			27.57
DDG 11/7/11	11/9/2011 10:10	MW11-04578		4.034	61.4	0.85	9.27	22.37	12.61	87.39			28.41
DDG 11-14-11	11/16/2011 10:19	MW11-04746		3.993	64.32	0.83	7.94	25.39	11.97	88.03			28.01
DDG 11-29-11	12/1/2011 8:03	MW11-05027	0.94	3.586	64.47	0.8	8.03	25.4	13.38	86.62	<5	1.544	29
DDG 12-6-11	12/9/2011 8:47	MW11-05278		3.688	61.7	0.94	8.7	25.27	12.36	87.64			27.87
DDG 12/19/11	12/21/2011 10:52	MW11-05536		4.39	64.07	0.94	7.56	24.47	12.47	87.53			26.69
DDG 12-27-11	12/29/2011 10:54	MW11-05684		4.153	61.59	0.89	8.62	28.68	11.67	88.33			29.31
DDG 1/3/12	1/5/2012 11:12	MW12-00097		3.666	61.49	0.84	8.65	29.13	12.16	87.84			27.28
DDG 1/9/12	1/18/2012 10:40	MW12-00402		4.514	54.63	0.85	7.94	24.17	10.43	89.57			26.95
DDG 2/1/12	2/3/2012 10:38	MW12-00796		4.876	59.13	0.93	7.75	25.62	13.98	86.02			26.32
DDG 2/7/12	2/13/2012 10:37	MW12-00972		4.978	60.46	0.84	9.11	27.28	13.65	86.35			28.65
DDG 2/15/12	2/17/2012 10:37	MW12-01093		4.985	60.31	0.86	8.75	29.12	11.64	88.36			29.37
DDG 2-20-12	2/21/2012 10:10	MW12-01135		5.265	61.98	0.88	8.62	31.69	13	87			27.4
DDG 2/27/12	3/1/2012 10:43	MW12-01360		5.122	59.92	0.87	8.34	32.82	13.01	86.99			27.77
DDG 3/5/12	3/7/2012 10:37	MW12-01477		4.54	59.08	0.88	9.98	30.61	12.06	87.94			28.44
DDG 3/12/12	3/14/2012 11:06	MW12-01637	0.99	4.98	61.97	0.75	8.3	27.34	12.02	87.98	<5	0.838	29.04
DDG 3/19/12	3/22/2012 10:37	MW12-01864		4.087	60.71	0.74	8.25	25.5	13.31	86.69			27.93

Customer: SIOUXLAND ETHANOL LLC

Address: 1501 KNOX BLVD
JACKSON, NE
UNITED STATES

Analyte			Lysine	Crude ash as received	Hunter L Value	Phosphorus	Crude fat as is	NDF as received	Moisture	Drymatter	Aflatoxin	DON (Vomitoxin)	Crude protein as received
Scheme			Amino Acid Profile	Ash Content: Feed	Hunter Color	Minerals: As Received (No Drymatter)	Fat content in Animal Feed	NDF	Moisture Content	Moisture Content	Aflatoxin by ELISA	Vomitoxin (DON) by ELISA	Protein Content
Detection Limit						0.0063					5	0.5	
Unit	Received	Order	%	%(m/m)		%(m/m)	%(m/m)	%	%(m/m)	%(m/m)	PPB	PPM	%(m/m)
DDG 3/27/12	3/29/2012 10:19	MW12-02004		3.67	63.63	0.71	7.89	30.37	11.93	88.07			28.42
DDG 4/2/12	4/5/2012 11:01	MW12-02167		3.636	61.27	0.82	8.24	29.13	11.49	88.51			27.42
DDG 4/9/12	4/11/2012 10:35	MW12-02292		4.337	63.48	0.77	8.1	24.21	11.18	88.82			28.16
DDG 5/3/12	5/7/2012 9:51	MW12-02895		3.968	64.82	0.88	8.23	22.88	11.68	88.32			29.53
DDG 5/9/12	5/11/2012 10:30	MW12-03042		4.212	64.25	0.76	7.6	26.61	11.07	88.93			28.45
DDG 5/14/12	5/17/2012 10:18	MW12-03188		4.821	60.95	0.81	7.66	22.84	11.24	88.76			27.6
DDG 5/21/12	5/24/2012 10:59	MW12-03358		4.587	61.8	0.77	8.18	23.19	12.89	87.11			26.13
DDG 5/30/12	6/1/2012 9:57	MW12-03543		4.602	60.62	0.89	7.04	23.15	12.98	87.02			28.22
DDG 6/8/12	6/12/2012 10:36	MW12-03838	0.93	4.468	63.86	0.76	7.08	24.98	10.55	89.45	<5	0.896	28.36
DDG 6/11/12	6/13/2012 11:44	MW12-03905		4.107	62.7	0.76	7.17	25.11	10.07	89.93			28.8
DDG 6/18/12	6/21/2012 11:26	MW12-04144		4.242	62.66	0.78	7.5	23.38	12.25	87.75			28.48
DDG 6/25/12	6/29/2012 11:19	MW12-04448		4.291	59.07	0.79	6.2	26.94	11.81	88.19			29.91
DDG 7/2/12	7/6/2012 10:20	MW12-04629		4.456	58.08	0.8	6.73	26.36	10.35	89.65			28.24
DDG 7/9/12	7/16/2012 10:48	MW12-04879		4.488	58.71	0.88	6.41	23.45	11.98	88.02			29.86
DDG 7/16	7/17/2012 10:33	MW12-04927		5.146	53.43	1.04	6.3	23.65	12.26	87.74			28.15
DDG 7/23/12	7/26/2012 10:11	MW12-05207		5.056	61.61	0.98	6.18	22.02	10.37	89.63			29.43
DDG 7/30/12	8/2/2012 10:31	MW12-05377		4.8	59.96	0.97	6.6	21.94	12.61	87.39			29.81
DDG 8/6/12	8/8/2012 10:22	MW12-05508		5.039	62.36	0.95	6.26	21.91	11.56	88.44			29.26
DDG 8/13/12	8/15/2012 11:10	MW12-05700		4.555	59.13	0.8	6.8	22.49	9.45	90.55			28.22
DDG 8/20/12	8/28/2012 10:18	MW12-05984		4.568	60.77	0.82	6.84	24.09	10.86	89.14			27.84
DDG 9/17/12	9/19/2012 10:48	MW12-06557		4.191	56.52	0.81	7.58	23.35	12.48	87.52	6	0.589	27.94

Customer: SIOUXLAND ETHANOL LLC

Address: 1501 KNOX BLVD
 JACKSON, NE
 UNITED STATES

Analyte			Lysine	Crude ash as received	Hunter L Value	Phosphorus	Crude fat as is	NDF as received	Moisture	Drymatter	Aflatoxin	DON (Vomitoxin)	Crude protein as received
Scheme			Amino Acid Profile	Ash Content: Feed	Hunter Color	Minerals: As Received (No Drymatter)	Fat content in Animal Feed	NDF	Moisture Content	Moisture Content	Aflatoxin by ELISA	Vomitoxin (DON) by ELISA	Protein Content
Detection Limit						0.0063					5	0.5	
Unit	Received	Order	%	%(m/m)		%(m/m)	%(m/m)	%	%(m/m)	%(m/m)	PPB	PPM	%(m/m)
DDG 9/25/12	9/28/2012 11:02	MW12-06812	1.13	3.953	59.51	0.69	6.28	23.23	11.38	88.62	8	0.584	29.02
DDG 10/1/12	10/3/2012 10:52	MW12-06917		4.139	61.82	0.7	6.43	25.14	9.41	90.59	7	0.728	29.14
DDG 10/8/12	10/11/2012 11:13	MW12-07115		4.251	61.16	0.72	6.49	26.14	10.95	89.05	5	0.59	28.97
10/11-10/12	10/17/2012 10:52	MW12-07261		5.218	58.4	0.97	7.08	22.17	10.44	89.56	<5	0.727	28.73